

# SOLUTIONS: DATA CENTERS

## ASAHI/AMERICA IN DATA CENTER APPLICATIONS

As cloud computing, AI, and IoT accelerate data generation, data centers have become essential infrastructure in today's digital world, which requires reliable, efficient, and scalable mechanical systems to support high-performance computing.

With more than 40 years of experience in water treatment, chemical handling, and water cooling applications, Asahi/America is a trusted provider of thermoplastic valves and piping systems. Our solutions deliver **low thermal conductivity, superior chemical resistance, lightweight installation, and long-term cost efficiencies** compared to metallic materials. Within the data centers sector, Asahi/America specializes in the following applications:

- Facilities and condenser water systems
- Water treatment systems
- Water cooling system - liquid cooling
- Chemical handling

## WHY ASAHI/AMERICA?

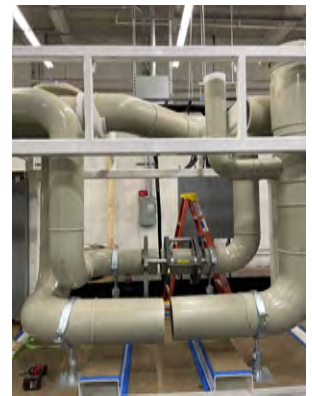
- Custom fabrication & design assistance
- Concept to completion product selection, project, shipping, and installation support
- Industry-leading 3-year warranty on valve & actuation products & other piping system product warranties
- Welding tool equipment available for purchase or rental
- Extensive service life for valve and piping systems
- Over 50 years of experience and proven successful installations

## ADVANTAGES OF THERMOPLASTICS

- Lightweight
- Corrosion resistant
- Easy to join and install
- Low cost/ high return on investment

## PRE-FABRICATION IN DATA CENTERS

- Available pre-fabricated and pre-assembled pipe spools manufactured to precise project specifications, reducing field welding and installation time
- Engineered and built-to-order chemical feed, filtration, and cooling skids ready for plug-and-play integration into data center mechanical rooms



## CHEMICALS & PIPING RECOMMENDATIONS\*

\*Note: These are general recommendations for typical chemicals used in different applications within data centers. Please contact Asahi/America Technical Services team at 1-800-343-3618 or [asahi@asahi-america.com](mailto:asahi@asahi-america.com) for specific application recommendations.

Pipes	Sulfuric Acid			Bleach		Caustic pH Adjust		Ozone
	<85%	85-93%	>93%	<12.5%	>12.5%	<50%	>50%	
Proline <sup>®</sup> (PP)	Yellow	Red	Red	Yellow	Red	Yellow	Red	Yellow
Chem Proline <sup>®</sup> (PE100RC)	Yellow	Red	Red	Green	Red	Green	Red	Red
Super Proline <sup>®</sup> (PVDF)	Green	Green	Red	Red	Red	Yellow	Red	Yellow
Ultra Proline <sup>®</sup> (ECTFE)	Green	Green	Green	Green	Green	Green	Yellow	Green

■ 20+ Years Service Life (Best)
 ■ 10-15 Years Service Life (Good)
 ■ Not recommended

Schedule a lunch and learn today with our experts!



# PRODUCT SOLUTIONS



## THERMOPLASTIC VALVES

- Ball, butterfly, diaphragm, check, gate, globe, pressure regulators, and multiport valves available
- Various thermoplastic material options for a wide range of applications: PVC, CPVC, PP, PVDF, ECTFE
- Excellent chemical and corrosion resistance
- Engineered with precision to deliver superior safety and performance



## PROLINE® (PP) INDUSTRIAL PIPING SYSTEMS

- Exceptional durability and low-end temperature performance
- Used for indoor or covered applications
- Good, broad chemical resistance
- Improved high-temperature tolerance compared to HDPE



## DOUBLE CONTAINED PIPING SYSTEMS

- Ideal for underground transport of hazardous chemicals & pressurized systems
- Asahi/America double contained piping systems meet EPA CFR 40 sections 280 & 281
- Complete range of molded and fabricated fittings (pressure-rated) and drainage fittings (not pressure-rated)
- Manual and low-point leak detection options are available



All Asahi/America valve and actuation products are backed by an industry-leading 3-year warranty.



## ELECTRIC & PNEUMATIC ACTUATORS

- Compact, yet powerful actuation options for valve sizes ranging from 1/2" - 24"
- Options & communication packages, including solenoids, positioners, limit switches available
- Full assemblies and valve/actuator packages available



## CHEM PROLINE® CHEMICAL PIPING SYSTEM (ADVANCED PE)

- Next level PE 100RC performance (Slow crack resistance is 30x better than domestic PE4710)
- UV resistant for indoor and outdoor applications
- Good, broad chemical resistance (recommended for bleach applications)
- High impact resistance



## SUPER PROLINE® (PVDF) AND ULTRA PROLINE® (ECTFE) INDUSTRIAL PIPING SYSTEMS

- Resistant to large variety of chemicals
- UV resistant for indoor and outdoor applications
- Wide temperature range when compared to HDPE or PP
- Heat fusion joining methods

Schedule a lunch and learn today with our experts!

