



**Specifications**

**Sizes:** 1/2" - 4"  
**Models:** ASTM Socket, NPT Threaded  
**Operator:** Manual Lever  
**Bodies:** PVC-U  
**Seats:** PTFE  
**Seals:** EPDM or FKM  
**Approvals:** CE, NSF-61  
**Max. Operating Pressure:** 150psi

**GP-V General Purpose Ball Valve**

**Parts List (Sizes 1/2" - 4")**



PARTS			
NO.	DESCRIPTION	PCS.	MATERIAL
1	Union Nut	2	PVC-U
2	End Connector	2	PVC-U
3	O-ring (End Con)	2	EPDM or FKM
4	O-ring Body	1	EPDM or FKM
5	Ball Seat Carrier	1	PVC-U
6	O-ring (Ball/Seat)	2	EPDM or FKM
7	Ball Seat	2	PTFE
8	Ball	1	PVC-U
9	Body	1	PVC-U
10	Stem	1	PVC-U
11	O-ring (Stem)	2	EPDM or FKM
12	Handle	1	PVC-U

**Standard Features (Sizes 1/2" - 4")**

- Ideally suited for water and light chemical duty
- PVC-U body
- EPDM or FKM seals
- True union design
- Dual stem O-rings
- Handle doubles as carrier adjustment tool
- Manual handle actuation
- On/Off service
- Full port
- Siliconic oil certified lubricant
- Comes with both socket and threaded end connectors
- These valves can not be actuated

**Sample Specification**

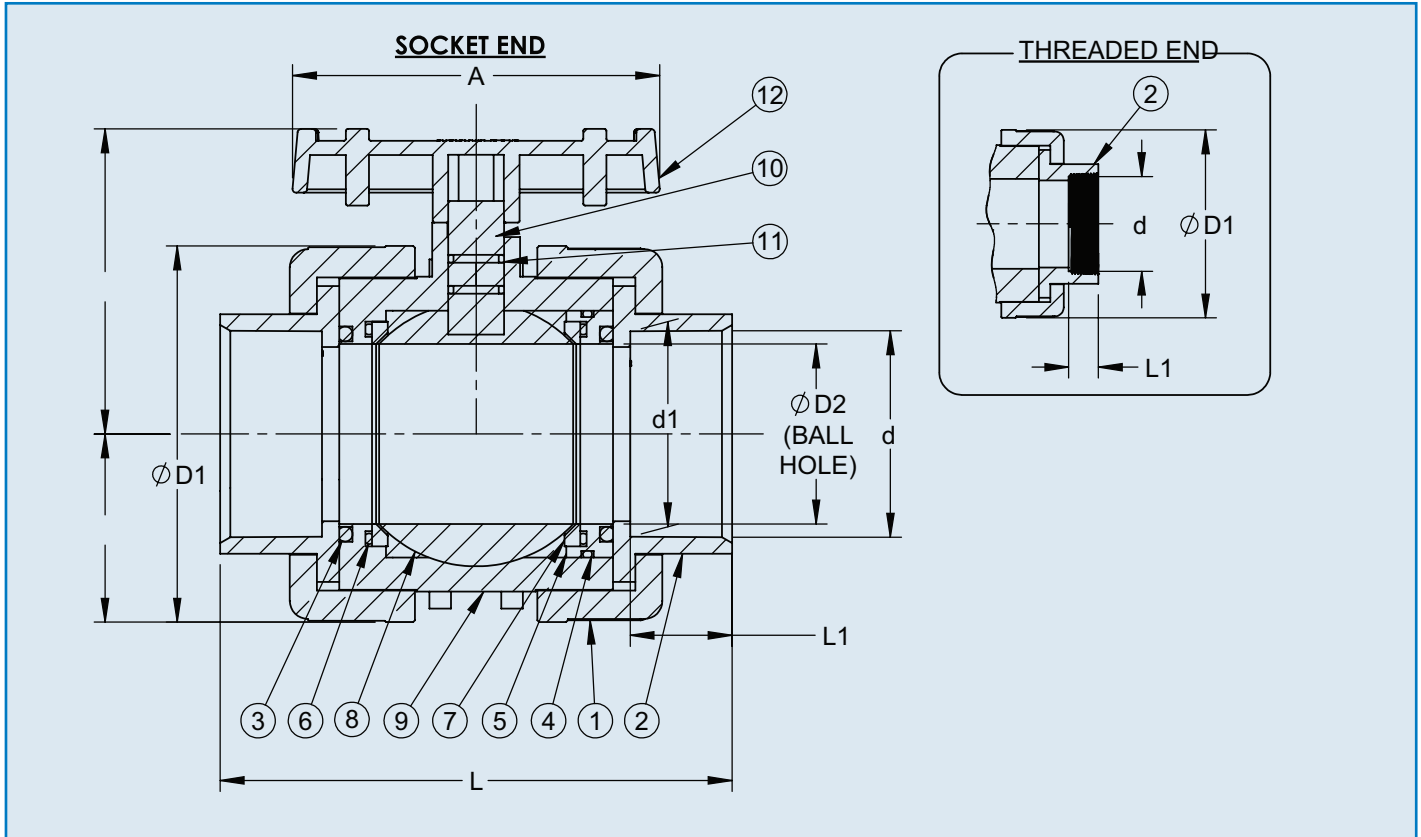
All GP-V general purpose ball valves sized 1/2" - 4" shall be of true union design with 2-way blocking capability. Valves shall feature EPDM or FKM carrier and end connector O-rings and PTFE seats. PTFE seats shall have EPDM or FKM backing O-rings to provide smooth even stem torque and to compensate for wear. Valves shall feature dual stem O-rings of EPDM or FKM. The handle shall double as the spanner wrench for maintenance and carrier adjustment.



**Socket**



**Threaded**



## Dimensions (Sizes 1/2" - 4")

NOMINAL SIZE		SOCKET									NPT THREADED		
inches	mm	H	H1	A	D1	D2	d	d1	L	L1	d	L	L1
1/2	15	2.25	0.97	2.84	1.93	0.58	0.85	0.83	3.71	0.90	1/2" - 14 NPT	3.15	0.54
3/4	20	2.54	1.16	3.09	2.32	0.78	1.06	1.05	4.18	1.02	3/4" - 14 NPT	3.66	0.56
1	25	2.82	1.35	3.46	2.70	0.98	1.33	1.31	4.77	1.14	1" - 11.5 NPT	4.17	0.66
1-1/4	32	3.23	1.57	3.94	3.13	1.26	1.67	1.65	5.20	1.26	1-1/4" - 11.5 NPT	4.76	0.68
1-1/2	40	3.67	1.88	4.33	3.76	1.55	1.91	1.89	6.03	1.44	1-1/2" 11.5 NPT	5.12	0.68
2	50	4.39	2.29	5.12	4.57	1.96	2.39	2.37	6.72	1.50	2" - 11.5 NPT	5.90	0.70
2-1/2	65	5.71	3.29	6.64	6.58	3.02	2.89	2.87	9.06	1.75	2-1/2" - 8 NPT	9.01	0.93
3	80	5.71	3.29	6.64	6.58	3.02	3.52	3.49	9.28	1.88	3" - 8 NPT	8.39	1.02
4	100	6.69	4.12	8.03	8.23	3.80	4.52	4.49	11.20	2.23	4" - 8 NPT	11.18	1.09

## Pressure vs. Temperature (psi, water, non-shock)

NOMINAL SIZE		PVC		
		32° F 70° F	71° F 104° F	105° F 140° F
inches	mm			
1/2 - 4	15 - 100	150	145	32

## CV Values

NOMINAL SIZE		Cv
inches	mm	
1/2	15	13
3/4	20	26
1	25	49
1-1/4	32	69
1-1/2	40	118
2	50	222
2-1/2	65	486
3	80	486
4	100	694

## Weight (lbs.)

NOMINAL SIZE		SOCKET THREADED
inches	mm	
1/2	15	0.5
3/4	20	0.5
1	25	1
1-1/4	32	1.5
1-1/2	40	2
2	50	3
2-1/2	65	9
3	80	9
4	100	15