

TYPE-21 AND TYPE-23 MULTIPOINT® BALL VALVE WITH SERIES 19 COM PACK® ON/OFF ELECTRIC ACTUATOR

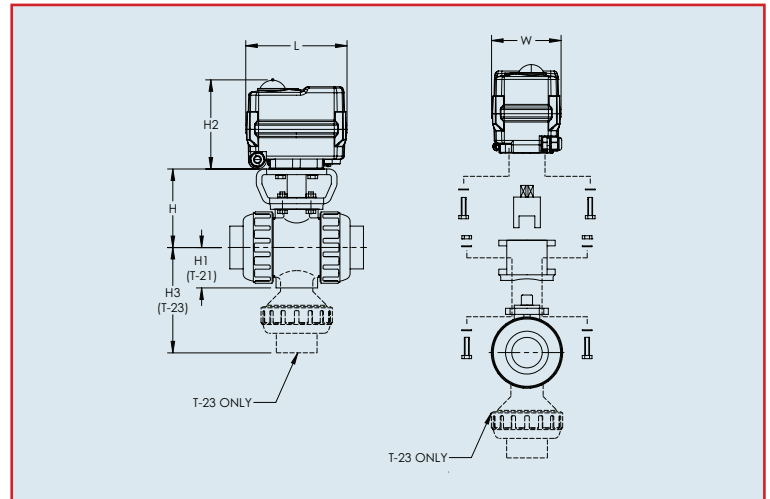


Specifications

Motor Type:	Reversing, brushless DC
Sizes:	C20 for 1/2" – 2" valves
Torque:	177 in-lbs
Voltage:	95 VAC to 265 VAC multi-voltage
Amp Draw:	0.18 Amp
Max Ambient Temp:	150° F
Enclosure:	NEMA 4X

Standard Features (Sizes 1/2" – 2")

- **Compact:** Compact and lightweight actuated valve package that is ideal for OEMs
- **Multi-voltage:** 95 VAC to 265 VAC or 24 VAC/VDC
- **Motor:** Reversing, brushless DC motor
- **Gear Train:** Permanently lubricated solid gears
- **Corrosion Resistant Enclosure:** NEMA 4X ABS enclosure with stainless steel trim
- **ISO mounting configuration**
- **Electrical Connection:** NEMA 4X cable gland with two-meter cable
- **Position Indication:** Highly visible dome position indicator
- **LED Position Indication:** RED closed, GREEN open
- **Manual Override:** Manually cycle valve via electroless nickel-plated hex key
- **Auxiliary Contacts:** Open and closed dry contacts rated 0.1 Amp @ 250 VAC, 0.5 Amp @ 30 VDC
- **Space Heater:** A two-watt heater is internally wired to limit condensation
- **QR Code:** Links to user manual; includes wiring schematic
- **CE Compliant:** All actuators are CE labeled
- **75% Duty Cycle:** Extended duty cycles are ideal for high cycling applications



Dimensions (inch)

Size	1/2"	3/4"	1"	1-1/4"	1-1/2"	2"
H	2.76	3.01	3.29	3.64	3.98	4.43
H1	1.14	1.38	1.54	1.85	2.17	2.60
H2	3.54	3.54	3.54	3.54	3.54	3.54
H3	3.08	3.56	4.32	N/A	5.71	6.66
L	4.01	4.01	4.01	4.01	4.01	4.01
W	2.76	2.76	2.76	2.76	2.76	2.76
Model	C20	C20	C20	C20	C20	C20

Weight (lbs)

Size	1/2"	3/4"	1"	1-1/4"	1-1/2"	2"
Weight	2.7	2.9	3.4	3.8	4.9	6.7

Engineering Data

Model	Torque (in-lbs)	95 - 265 VAC		24 VAC/VDC		Cycle time per 90 degrees [seconds] *
		Amp Draw	Duty Cycle	Amp Draw	Duty Cycle	
C20	177	0.18	75%	0.96	75%	10

Amp draw is considered locked rotor

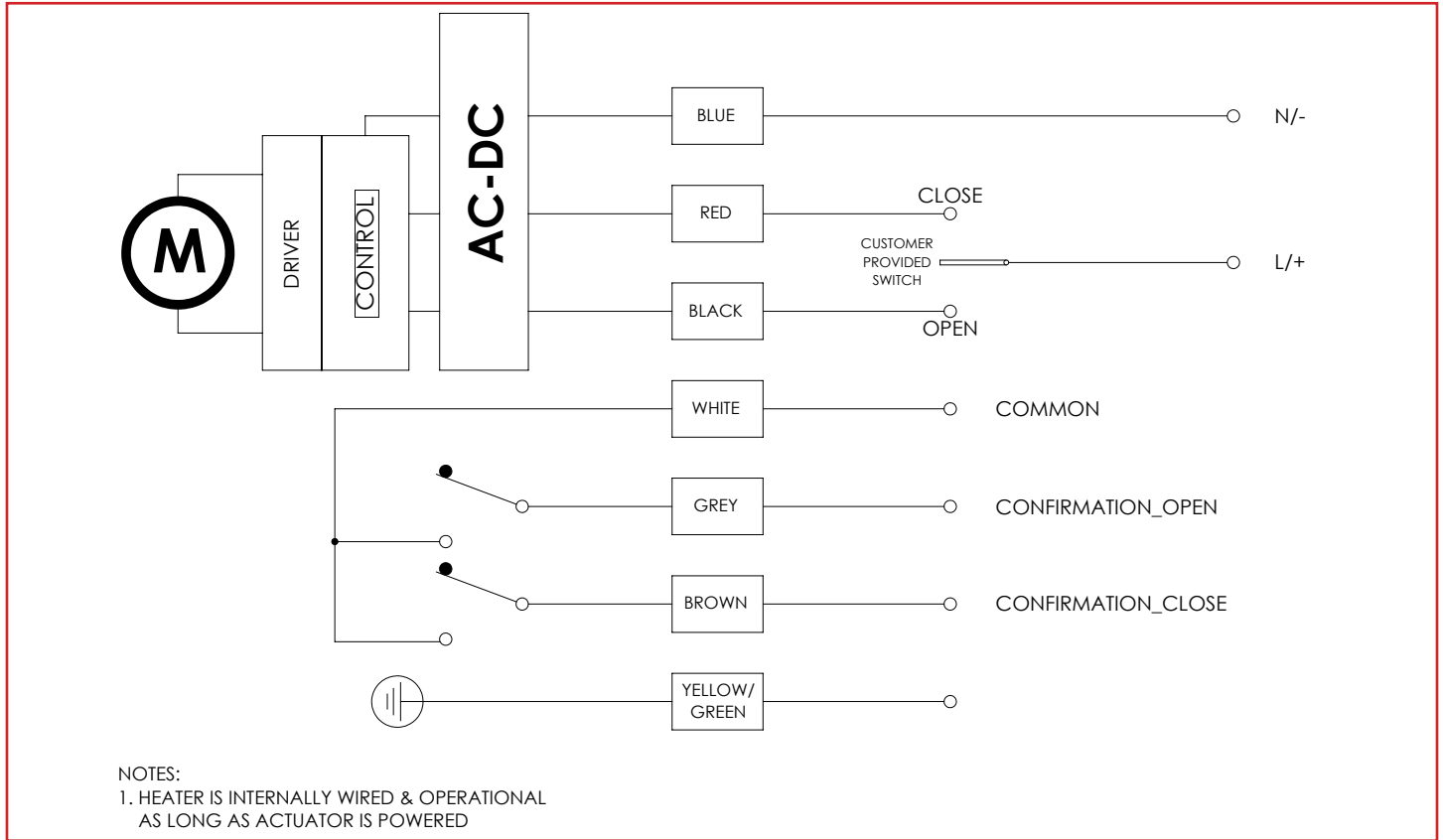
*Cycle times are approximate

Duty cycle shown for ambient temp (73° F)



TYPE-21 AND TYPE-23 MULTIPOINT® BALL VALVE WITH SERIES 19 COM PACK® ON/OFF ELECTRIC ACTUATOR

Wiring Diagram



Sample Specifications

All Series 19 CAV on/off electric actuators shall have a brushless DC motor that accepts multiple voltages, permanently lubricated steel gears, NEMA 4X ABS enclosure with stainless steel trim, visual beacon indication, ISO 5211 valve mounting platform, manual override, and be CE compliant. Standard features shall include a heater, one set of dry contacts for PLC confirmation, an LED indicator, and a QR code that links to its user manual and wiring schematic.

Series 19 Actuator Selection Guide

Valve	Valve Size	C20	S20	S50	S110
Omni® Type-27 Ball Valves	3/8" - 2"	X			
Type-21/21a SST Ball Valves	1/2" - 2"	X	X		
	2-1/2" - 3"			X	
Type-23 Multipoint® Valves	4"				X
	1/2" - 2"	X	X		
	3"			X	
Type-57P Butterfly Valves	4"				X
	1-1/2" - 2-1/2"		X		
	3" - 4"			X	
	5" - 6"				X

