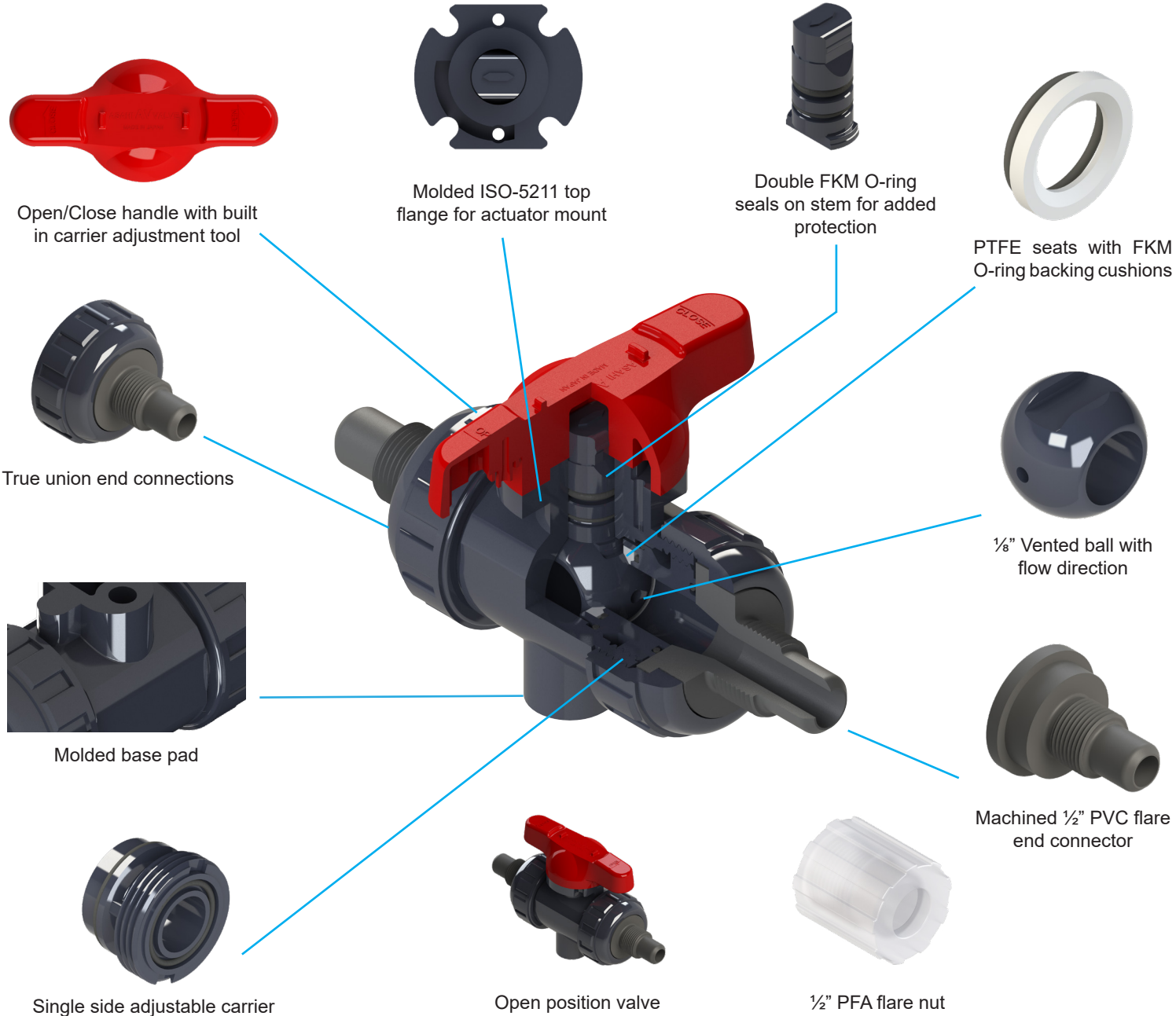


TYPE-21a 1/2" FLARE FITTING VENTED BALL VALVE

Engineered valve solution for 1/2" flare connection in sodium hypochlorite applications



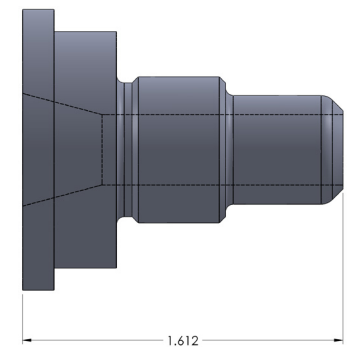
DESCRIPTION:

Asahi/America, Inc. PVC/FKM Type-21a ball valve with 1/8" vent hole drilled on upstream side of valve with flow direction arrow; 1/2" flare end connectors and PFA flare nut; FKM seals.

PART NUMBERS:

Description	Part Number
Assembled flare valve	11160526005
Single flare end connector with flare nut	1000862

FLARE FITTING DIMENSION:



*For valve dimensions, please see Type-21/ Type-21a catalog dimensions.