

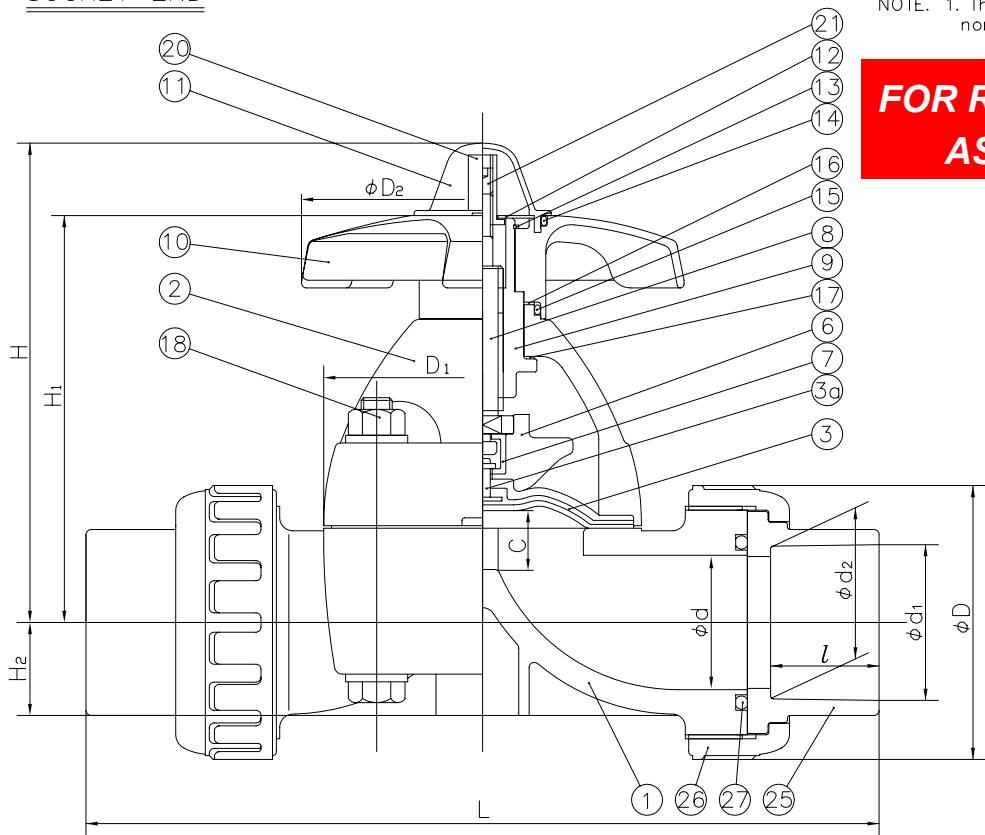
In case of PTFE diaphragm

DIMENSIONS TABLE

UNIT : inch

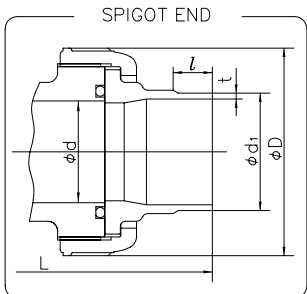
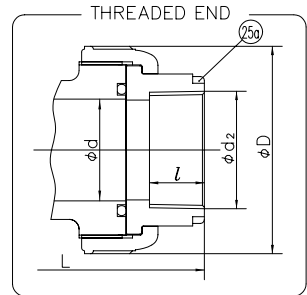
NOMINAL SIZE	d	SOCKET											THREADED				SPIGOT (BUTT END)															
		PVC,C-PVC					PP,PVDF (DIN)			PP,PVDF (IPS)			d ₁	l	L	PP,PVDF			D	D ₁	D ₂	C (LIFT)	H	H ₁	H ₂	S	S ₁	S ₂				
		ANSI SCH80		L	DIN 16962		L	d ₁	l	L	d ₁	l				L	d ₁	l											t	t	L	
		d ₁	d ₂		d ₁	d ₂							d ₁	d ₂	d ₁				d ₂	d ₁	d ₂	t	t									
1/2"	15mm	0.63	0.848	0.836	0.875	5.47	0.768	0.760	0.57	4.92	0.83	0.87	5.43	1/2 - 14 NPT	0.59	5.04	5.04	0.787	0.728	0.098	0.075	5.906	1.89	2.13x2.60	3.46	0.39	4.09	3.39	0.49	0.98	0.28	0.51
3/4"	20	0.79	1.058	1.046	1.000	6.18	0.965	0.957	0.63	5.55	1.03	1.00	6.09	3/4 - 14 NPT	0.67	5.83	5.83	0.984	0.886	0.106	0.075	6.772	2.36	2.13x2.60	3.46	0.39	4.17	3.46	0.57	0.98	0.28	0.51
1"	25	0.98	1.325	1.310	1.125	7.32	1.240	1.232	0.71	6.46	1.30	1.13	7.24	1 - 11 1/2 NPT	0.79	6.77	6.77	1.260	0.886	0.118	0.094	7.677	2.76	2.64x3.15	3.46	0.47	4.37	3.66	0.73	0.98	0.28	0.51
1 1/4"	32	1.26	1.670	1.655	1.250	7.95	1.553	1.543	0.81	6.97	1.65	1.25	7.80	1 1/4 - 11 1/2 NPT	0.87	7.40	7.40	1.575	1.024	0.146	0.094	8.346	3.23	2.64x3.15	3.46	0.47	4.57	3.82	0.89	0.98	0.28	0.51
1 1/2"	40	1.57	1.912	1.894	1.375	10.47	1.947	1.937	0.93	9.09	1.89	1.37	10.28	1 1/2 - 11 1/2 NPT	0.98	9.65	9.65	1.969	1.260	0.181	0.118	10.866	3.94	4.25x4.25	6.14	0.83	6.97	5.67	1.08	1.77	0.35	0.59
2"	50	2.05	2.387	2.369	1.500	11.54	2.461	2.445	1.08	10.79	2.36	1.50	11.54	2 - 11 1/2 NPT	1.10	11.06	10.95	2.480	1.417	0.228	0.118	12.087	4.17	4.84x4.84	6.14	0.98	7.52	6.22	1.42	1.77	0.35	0.59

SOCKET END

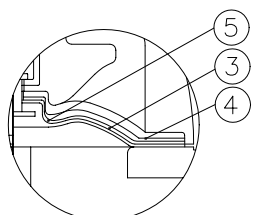


NOTE. 1. The shape and appearance of assembly differ a little with nominal size compared to this drawing.

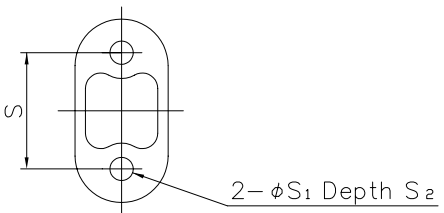
FOR REFERENCE ONLY
ASAHI/AMERICA



25a	RING	2	STAINLESS STEEL 304	used for C-PVC connector size 1/2~1"
27	O-RING (C)	2	□ EPDM □ Others ()	
21	SCREW	1	STAINLESS STEEL 304	
20	STOPPER	1	COPPER ALLOY (C3604)	
18	BOLT·NUT·WASHER	4sets	□ STAINLESS STEEL 304 □ Others ()	
17	THRUST RING (B)	1	UHMWPE	
16	THRUST RING (A)	1	UHMWPE	
15	O-RING (B)	1	EPDM	
14	O-RING (A)	1	EPDM	
13	RETAINING RING-C TYPE	1	STAINLESS STEEL 304	
12	NAME PLATE	1	PVC	
11	GAUGE COVER	1	PC	
10	HAND WHEEL	1	PP	
9	SLEEVE	1	COPPER ALLOY (C3604)	
8	STEM	1	COPPER ALLOY (C3604)	
7	JOINT	1	STAINLESS STEEL 304	
6	COMPRESSOR	1	PVDF	
5	PVDF GAS BARRIER	1	PVDF	used for PVDF body/PVDF DIA.
4	CUSHION	1	EPDM	used for PTFE diaphragm
3a	INSERTED METAL OF DIAPHRAGM	1	STAINLESS STEEL 304	
3	DIAPHRAGM	1	□ EPDM □ PTFE □ others ()	
26	UNION NUT	2	BODY END CONNECTOR UNION NUT / BONNET	
25	END CONNECTOR	2	□ PVC/PVC □ C-PVC/PP	
2	BONNET	1	□ PP/PP □ PVDF/PPG	
1	BODY	1	□ PVDF/PVDF	
No.	DESCRIPTION	No. REQ'D	MATERIAL	REMARKS



In case of PVDF body and PTFE diaphragm (Detail of holes for insert metal fittings)



THIS DRAWING AND ALL INFORMATION HEREON IS THE PROPERTY OF ASAHI/AMERICA. ANY COPYING, REPRODUCTION OR UNAUTHORIZED USE IS FORBIDDEN WITHOUT WRITTEN CONSENT.

	NAME	DATE
DR	KENICHI MIYAZAKI	10/16/01
APPD	DAVE HURLEY	10/16/01
PROD	LEO LESTER	10/16/01
WO#/CO#		
FILE		

ASAHI/AMERICA
ISO 9001 CERTIFIED
35 GREEN STREET, P.O. BOX 653, MALDEN, MA.

TRUE UNION DIAPHRAGM VALVE
TYPE 14
1/2" THRU 2"

SIZE	DWG. NO.	REV
A	0062DI	E

SCALE NTS SHEET 1 OF 1