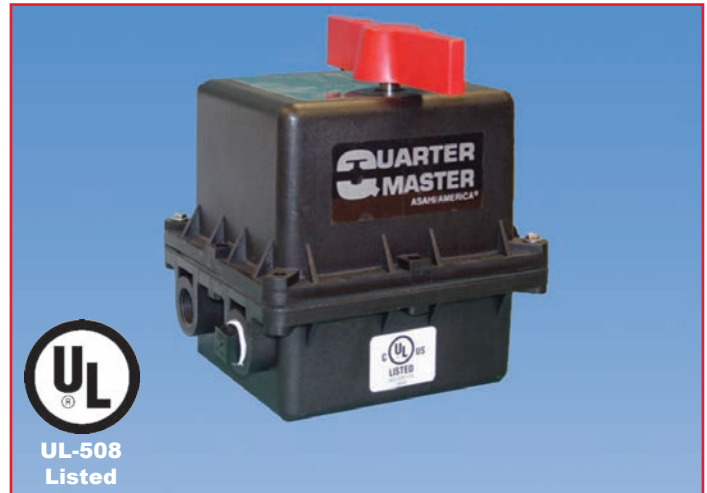


## Standard Features

- **Motor:** Reversing, brushless, capacitor-run 120 VAC 50/60 Hz, single phase
- **Overload protection:** Integral thermal overload protection for motor windings with automatic reset
- **Gear train:** Permanently lubricated
- **Corrosion resistant enclosure:** Engineered resin rated NEMA Type 4X with stainless steel trim
- **ISO mounting configuration:** F05 x 14mm star
- **Conduit:** Two 1/2" NPT conduit entries to eliminate cross feed between control, feedback, and power signals
- **Position indication:** Highly visible position indicator for positive position of valve
- **Declutchable manual override:** Push down on handle and rotate in the appropriate direction (CCW for open, CW for close)
- **Limit switches:** Standard end of travel limit switches can be used for light indication (not to be use with PLC for position confirmation)
- **Corrosion resistant mounting:** Mounting is with PPG or stainless steel bracket, stainless steel coupling, and stainless steel hardware
- **CE compliant motor:** All 120 VAC and 220 VAC motors are CE compliant and stamped as such
- **Extended duty cycles:** Our extended duty cycles are ideal for modulating and high cycling applications
- **Output torque:** Series 94 electric actuators have an output torque range from 150 in./lbs. to 300 in./lbs.
- **Enclosure:** Corrosion proof weatherproof rated Type 4X
- **Captivated SS hex head slotted cover screws**



## Engineering Specifications

Size: A94, B94  
 Torque: 150-300 in./lbs  
 Voltage: 120 VAC 1Ph 50/60 Hz  
 Amp Draw: A94 .5A, B94 .8A  
 Conduit Entry: Two (2) 1/2" NPT  
 Max Ambient Temperature: 150° F  
 Switches: Two single pole, double throw (Two SPDT)  
 15 amp rated  
 Cycle Time per 90°: A94, B94: 5 seconds

## Options

- Auxiliary (additional) limit switches
  - Heater and thermostat
  - RHM (see page 199)
  - Mechanical brake
  - Transmitter
  - Cycle length control module (CLC)
  - Two-wire control
  - Center-off
  - Failsafe battery back up (Protek)
  - Voltages
  - Local Remote Station (LL200)
- See page 187 for more details regarding options.

## Engineering Data

Model	Torque (in./lbs)	120 VAC		220 VAC		12 VDC		24 VDC		12 VDC		24 VAC		Cycle Time per 90 Degrees (seconds)*	Weight (lbs)
		Amp Draw	Duty Cycle	Amp Draw	Duty Cycle	Amp Draw	Duty Cycle	Amp Draw	Duty Cycle	Amp Draw	Duty Cycle	Amp Draw	Duty Cycle		
A94	150	0.5	100%	0.4	100%	2.0	75%	4.0	75%	2.0	75%	4.0	75%	5	3.5
B94	300	0.8	75%	0.6	75%	2.0	75%	4.0	75%	2.0	75%	4.0	75%	5	3.5

Note: Amp rating is considered locked rotor. Duty cycles are for ambient temperature (73° F).

\*Cycle times are approximate.

## Standard Features

- **Motor:** Reversing, brushless, capacitor run 120 VAC 50/60 Hz, single phase
- **Overload protection:** Integral thermal overload protection for motor windings with automatic reset
- **Gear train:** Permanently lubricated, solid gear that is Rockwell hardened
- **Corrosion resistant enclosure:** Engineered resin rated Type 4X with stainless steel trim
- **ISO mounting configuration:** F05/14mm star
- **Conduit:** Two 1/2" FNPT conduit entries to eliminate cross feed between control, feedback, and power signals
- **Position indication:** Highly visible position indicator for positive position of valve
- **Decutchable manual override:** Push down on handle and rotate in appropriate direction (CCW for open/CW for close)
- **Limit switches:** Two (2) SPDT end of travel limit switches can be used for light indication (not to be use with PLC for position confirmation)
- **RHM Module:** Module consisting of a heater and thermostat, and 2-SPDT 8A dry contact relays for PLC position confirmation, or auxiliary equipment
- **Captivated SS hexhead slotted enclosure screws**
- **Corrosion resistant mounting:** Mounting is with PPG or SS bracket, SS coupling and SS fasteners
- **CE compliant motor:** All 120 VAC and 220 VAC motors are CE compliant stamped as such
- **Extended duty cycles:** Extended duty cycles are ideal for modulating and high cycling applications
- **Output torque:** Series 94 Electric Actuators have an output torque range from 150 in/lbs to 300 in/lbs
- **Enclosure:** Corrosion proof weather proof rated Type 4X



## Engineering Specifications

Size: A94, B94  
 Torque: 150-300 in/lbs  
 Voltage: 120 VAC 1Ph 50/60 Hz  
 Amp Draw: A94 .5A, B94 .8A  
 Conduit Entry: Two (2) 1/2" FNPT  
 Max Ambient Temperature: 150° F  
 Switches: Two (2) single pole, double throw (2-SPDT) 15 amp rated  
 Cycle Time per 90°: A94, B94: 5 seconds  
 RHM Module: Heater and thermostat with two (2) SPDT 8A dry contact relays (Auxiliary switches)

## Options

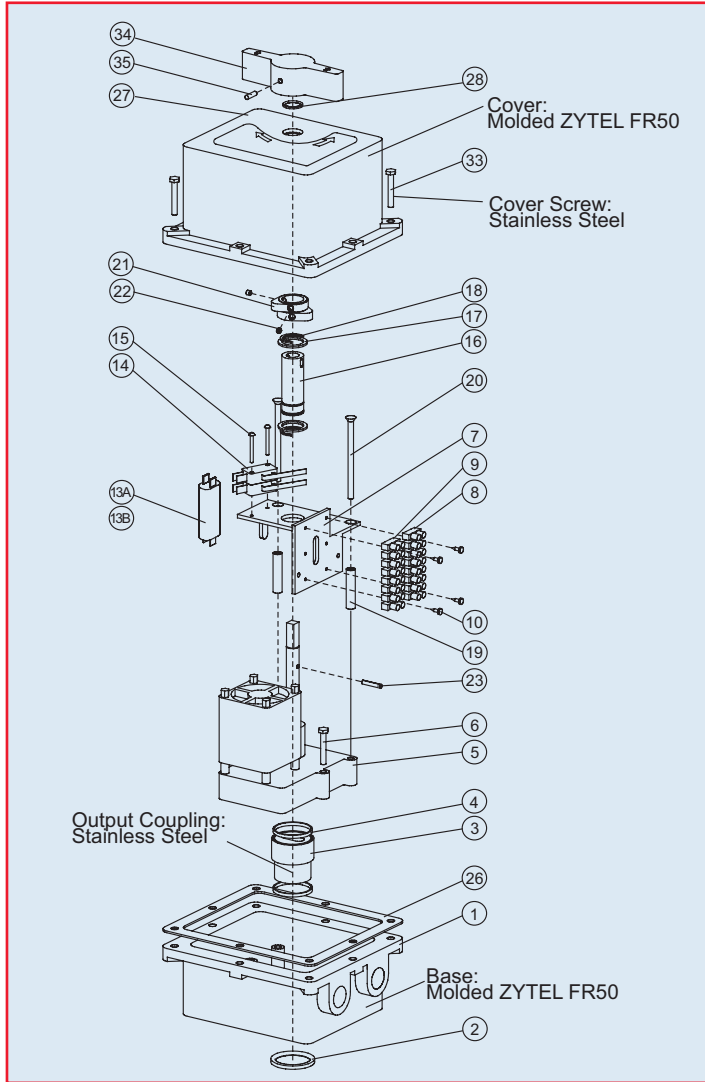
- Feedback Potentiometer
- Positioner (modulating PCB)
- Transmitter
- Mechanical brake
- Cycle Length Control Module (CLC)
- Two-wire Control
- Failsafe Battery Back Up (Protek)
- Voltages
- HMI/LRS Control Station

## Engineering Data

Model	Torque (in/lbs)	120 VAC		220 VAC		12 VDC		24 VDC		12 VDC		24 VAC		Cycle Time per 90 Degrees (seconds)*	Weight (lbs)
		Amp Draw	Duty Cycle	Amp Draw	Duty Cycle	Amp Draw	Duty Cycle	Amp Draw	Duty Cycle	Amp Draw	Duty Cycle	Amp Draw	Duty Cycle		
A94	150	0.5	100%	0.4	100%	2.0	75%	4.0	75%	2.0	75%	4.0	75%	5	3.5
B94	300	0.8	75%	0.6	75%	2.0	75%	4.0	75%	2.0	75%	4.0	75%	5	3.5

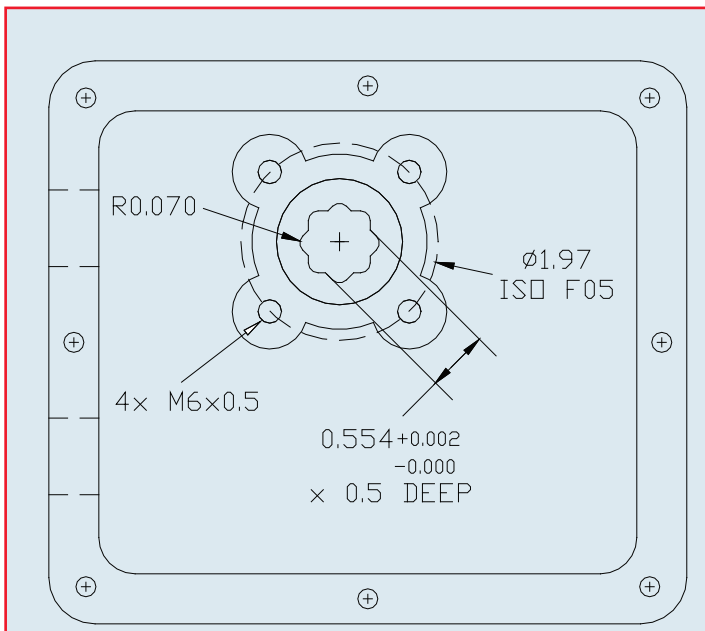
Note: Amp rating is considered locked rotor. Duty cycles are for ambient temperature (73° F).

\*Cycle times are approximate.



## General Parts List

PARTS LIST			
NO.	Part Number	Quantity	Description
1	7403002	1	Base
2	7403000	1	Base Seal
3	7403043	1	Output Coupling
4	7403005	2	Coupling Gasket
5	7403004	1	Motor(120VAC)
6	ACTMSC	2	Motor Screw
7	7403011	1	Base Plate
8	7401420	1	Terminal Block 1-8
9	7401425	1	Terminal Block 9-16
10	ACTMSC	4	Terminal Block Screw
13A	7401948	1	4.2 mFD Capacitor-A94
13B	7402004	1	6.7 mFD Capacitor-B94
14	7401460	2	Limit Switch
15	ACTMSC	2	Limit Switch Screw
16	7403016	1	Outer Shaft
17	7403006	2	Outer Shaft Gasket
18	ACTMSC	2	Retaining Ring
19	ACTMSC	2	Standoff
20	ACTMSC	2	Base Plate Screw
21	7401480	2	Cam
22	ACTMSC	4	Cam Set Screw
23	ACTMSC	1	Pin
26	7403007	1	Base Gasket
27	7403001	1	Cover
28	7403020	1	Cover Seal
33	ACTMSC	8	Cover Screw
34	7403003	1	Handle
35	7401700	1	Handle Screw



## Sample Specification

All Series 94 electric actuators shall have a thermally protected, bi-directional (reversing type), capacitor run motor with a permanently lubricated gear train. 120 VAC and 220 VAC motors shall conform to CE and be indicated on motor housing. Actuator shall have a Zytel FR50 engineered resin housing with stainless steel trim, rated Type 4X. Each actuator to have a declutchable manual override, visual position indication, ISO mounting configuration, as manufactured by Asahi/America, Inc.