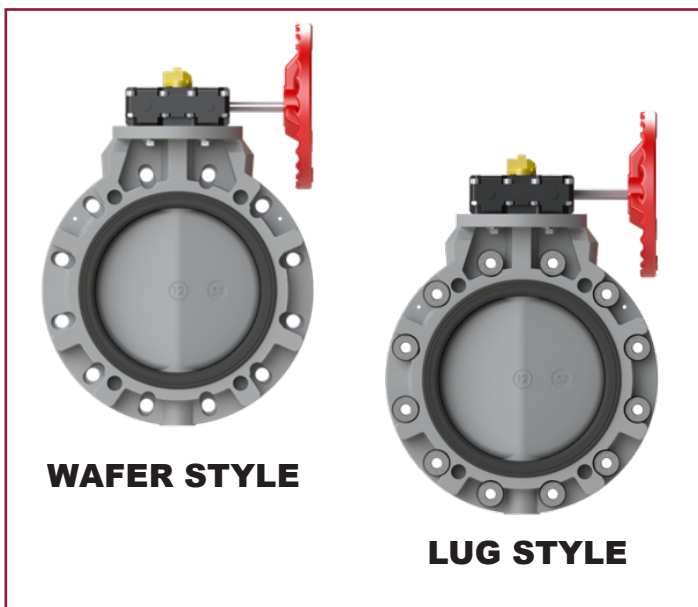
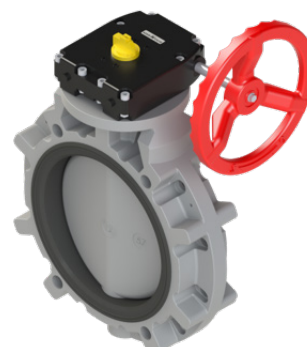


# NEW SIZES: 10" & 12" CPVC TYPE-57P BUTTERFLY VALVE NOW AVAILABLE



## WAFER STYLE - GEAR OPERATOR PART NUMBERS:

Size inch	Elastomer	Part Number	Elastomer	Part Number
10"	EPDM	173883100	FKM	173884100
12"	EPDM	173883120	FKM	173884120



## LUG STYLE - GEAR OPERATOR PART NUMBERS:

Size inch	Elastomer	Part Number	Elastomer	Part Number
10"	EPDM	173890100	FKM	173890120
12"	EPDM	173890120	FKM	173891120



## INTERCHANGEABILITY:

- The CPVC Type-57P butterfly valve shares the same face-to-face dimensions as all like size Type-57P butterfly valves

## AVAILABILITY:

- Valve materials are in stock, ready to be assembled, tested and shipped to order from our Lawrence, MA facility

## DESCRIPTION:

Effective immediately, Asahi/America, Inc. introduces the CPVC body and disc Type-57P Butterfly valve in sizes 10" & 12". The CPVC Type-57P is available now in both ANSI wafer style connection and with 316 stainless steel lug inserts in sizes 10" & 12" with Plasgear™ operator. Additionally, the CPVC Type-57P can be actuated both electrically and pneumatically, as well as various manual accessories can be installed.

## SPECIFICATION:

- Products:** CPVC Type-57P butterfly valve
- Sizes/Models:** 10" & 12" wafer or lug style butterfly valve with Plasgear™ operator
- Materials:** CPVC body and disc, EPDM or FKM seat and seals

*Please see full Type-57P lug butterfly valve data sheet for more information. Located under Butterfly Valve Options section of our website.*