



Series 92 Electric Actuators

Standard Features (Sizes 1-1/2" – 3")

- Reversing, capacitor run 120 VAC 50/60 Hz, motor
- Integral thermal overload protection with automatic reset
- Permanently lubricated, Rockwell hardened gearing
- Thermally bonded polyester powder coat finish
- Weather proof enclosure with SS trim
- Two 1/2" FNPT conduit entries to eliminate cross feed between control, feedback, and power signals
- Highly visible Beacon position indicator
- Standard end of travel limit switches can be used for light indication [not to be used with PLC for position confirmation]
- Declutchable manual override
- RHM Module (consisting of a heater and thermostat, and 2-SPDT 8A dry contact relays for PLC position confirmation). See page 71.
- Captivated SS hexhead slotted enclosure screws
- Mounting is with SS bracket, ss coupling and ss fasteners

Options

- Feedback Potentiometer
- Positioner (modulating PCB)
- Transmitter
- Explosion Proof Enclosure [UL1203]
- Voltages
- HMI/LRS Control Station

Specifications

Motor Type: Reversing, 120VAC
single phase

Sizes: S92 for 1-1/2" – 3"

Torque: S92, 400 in/lbs

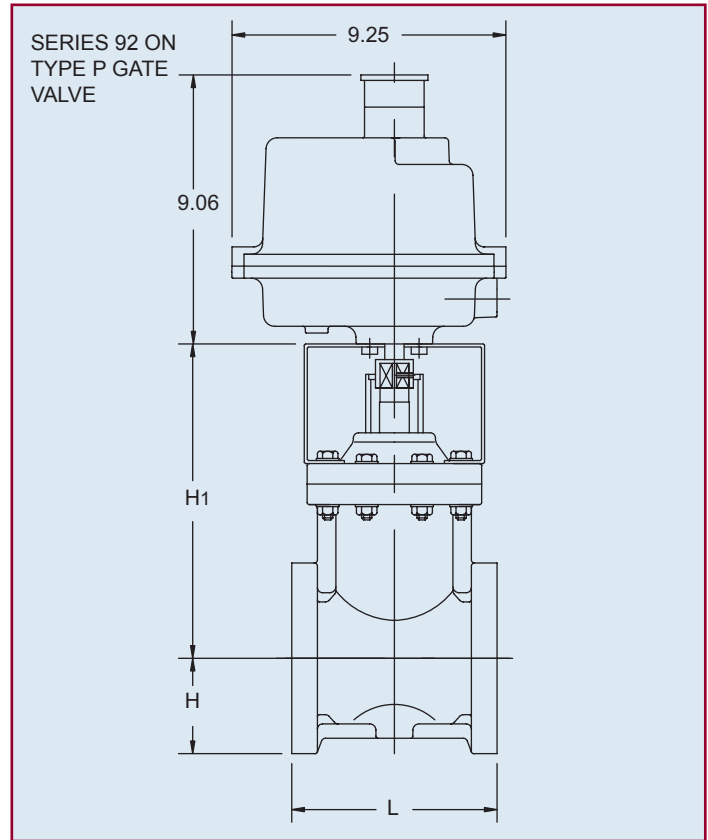
Voltage: 120 VAC, Single Phase

Amp Draw: S92: .50 Amps

Max Ambient Temp: 150° F

Switches: 2-SPDT

RHM Module: 15 Watt heater & 2-SPDT 8A dry contact relays

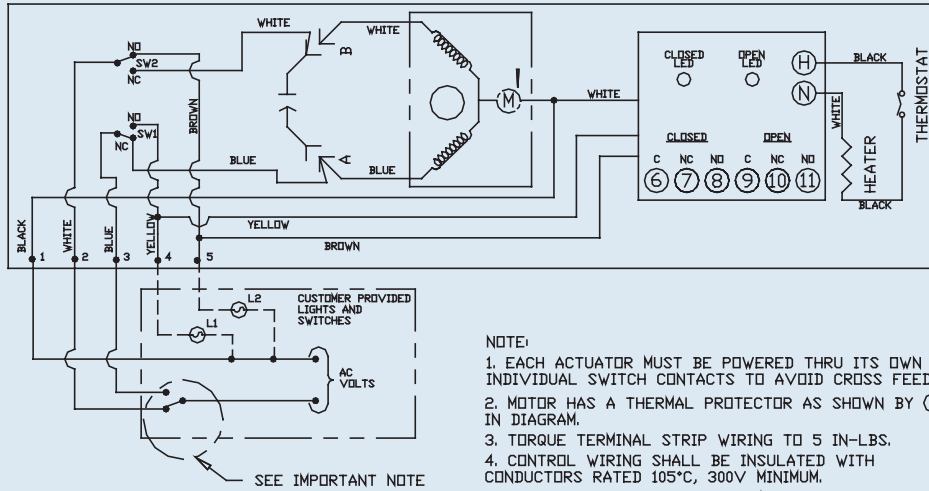


Dimensions (in.)

NOMINAL SIZE		H	H1	L
INCHES	mm			
1 -1/2	40	2.50	9.00	6.50
2	50	3.00	10.46	7.01
3	80	3.75	14.06	7.99

AC Wiring (For 120 VAC only)

WIRING DIAGRAM FOR 120 VAC AND 220 VAC ONLY
ACTUATOR SHOWN IN COUNTER-CLOCKWISE EXTREME OF TRAVEL, OR 'OPEN' POSITION



NOTE TO WIRING DIAGRAM:

1. EACH ACTUATOR MUST BE POWERED THROUGH ITS OWN INDIVIDUAL SWITCH CONTACTS TO AVOID CROSS FEED.
2. MOTOR HAS A THERMAL PROTECTOR AS SHOWN BY (M) IN DIAGRAM.

- 3.. IF 120 VAC MODELS ARE PLC DRIVEN, OUTPUT CONTACTS OF PLC SHOULD BE RATED AT A MINIMUM OF 1.5 TIMES REQUIRED INPUT VOLTAGE OF ACTUATOR.

Engineering Data

Valve Size	Ac-tuator Model	Torque (in/lbs)	Duty Cycle	Cycle Time (Sec)	Amp Draw						Weight (Lbs)
					120 VAC	220 VAC	12 VDC	24 VDC	12 VAC	24 VAC	
1 1/2"	S92	400	25%	315	0.5	0.4	2.0	4.0	2.0	3.0	26.8
2"	S92	400	25%	315	0.5	0.4	2.0	4.0	2.0	3.0	29.5
3"	S92	400	25%	315	0.5	0.6	2.0	4.0	2.0	3.0	33.3

Duty cycle shown are for ambient temp. (73° F)
Cycle times are approximate.