

# ASAHI/AMERICA PRODUCT OFFERINGS

---

**Thermoplastic Valves & Actuators  
Piping Systems • Welding Equipment**



# Your Experts in Plastics™



Asahi/America, Inc. has been a leading supplier and manufacturer of corrosion resistant thermoplastic valves and piping systems for over 50 years. From the harshest chemicals to the toughest weather conditions, our family of fluid flow solutions provides dependable performance for a wide range of applications and reliability where it matters most.

Through our global partnerships with Asahi Yukizai Corporation and AGRU, we are uniquely positioned to deliver the highest quality products to customers in the United States, Latin America, Canada, Australia, and the United Kingdom.

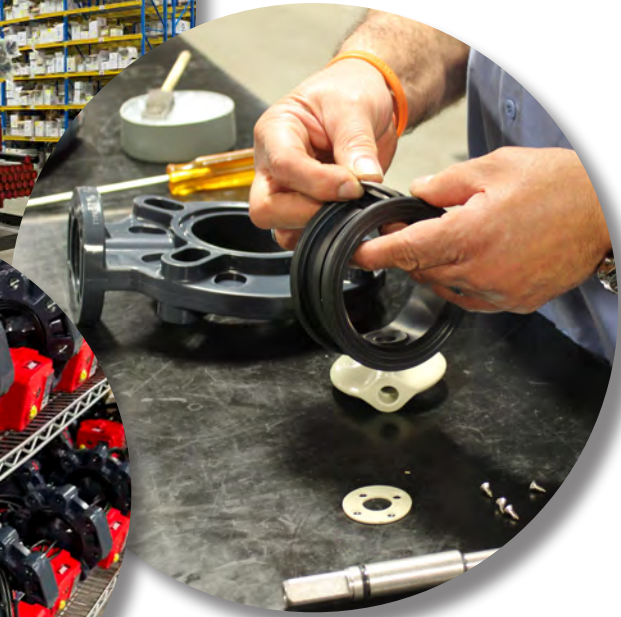
Asahi/America doesn't specialize in one industry – we specialize in your industry. With a catalog of products designed to handle specific applications, meet industry standards, exceed performance expectations, and a staff to support you through product and material recommendations and selection, training and installation, Asahi/America is the obvious partner for your next project.

## We Know Your Industry

- Aquariums & Zoos
- Automotive
- Bleach Plants
- Chemical Processing
- Controlled Environmental Agriculture
- Food & Beverage
- Institutional
- Landfill
- Life Sciences
- Mining
- Offshore Oil
- Pharmaceutical
- Plating & Pickling
- Power
- Pulp & Paper
- Semiconductor
- Ultrapure Water
- Wastewater Treatment

Headquartered in Lawrence, Massachusetts, Asahi/America maintains a vast inventory of valves, actuation, pipe and fittings, which can be shipped directly to customers or incorporated into custom spools and skids by our fabrication department. Our 200,000-square-foot facility also houses a machine shop, valve and actuation assembly shops, a Class 1000 cleanroom, research and development lab, welding equipment rental, and corporate offices. Our Louisiana-based fabrication division specializes in large-quantity and large-scale custom pieces.

Our manufacturing, sales, engineering and support staff have decades of experience with thermoplastics and the industries we serve. As an ISO 9001:2015 certified manufacturer, our employees are dedicated to providing quality products and services, which we couple with education and training to ensure a complete solution for your application.



## Commitment to Communication and Education

- Certified CEU/PDH Presenters
- Customer & End-User Engagement
- Field Training Services
- Industry- and Application-Specific Certifications & Approvals
- Industry Organization & Association Memberships & Involvement
- Product & Workmanship Warranties
- Vast Informational, Technical & Video Libraries

# Quality Products

- Air & Gas Handling Piping Systems
- Double Wall Environmental Piping Systems
- Electric & Pneumatic Actuation
- High Purity Piping Systems
- Manual Valves
- Single Wall Industrial Piping Systems
- Welding Equipment

# Innovating and Evolving

Asahi/America strives to provide the best products and service for our customers every day. From our Class 1000 cleanroom to the cutting-edge technology in our machine and fabrication shops, we never stop looking for ways to improve.



# Outstanding Service

Whether you're making repairs, expanding an existing system, or designing from scratch, Asahi/America is your single source for a complete solution. The components we offer – valves, actuation, pipe and fittings – are engineered to work together. Using our systems approach means using one company to provide the parts you need and the engineering expertise to put them together; one company for equipment and training; one company to answer questions and support you from concept through completion.

# Solutions and Support

- BIM/CAD Product Library
- Custom Fabrication Services
- Customer Portal (MyAsahi)
- Engineering Support
- Expanded Cleanroom Capabilities
- Global Manufacturing Partnerships
- Research & Development Facility
- US & International Distribution Network
- Welding Equipment Rental Services



# Thermoplastic Valves



Asahi/America valve and actuation products have a three-year product warranty. Scan the QR code or visit our website at [asahi-america.com/support/warranty-policy](http://asahi-america.com/support/warranty-policy) for full terms and conditions.

## Type-21/21a Ball Valves

**Sizes:** 1/2" - 6"  
**Models (PVC & CPVC):** Socket, threaded, flanged (ANSI)  
**Models (PP & PVDF):** IPS or metric (DIN) socket, threaded, butt, flanged (ANSI)  
**Bodies:** PVC, CPVC, PP, PVDF  
**Seats:** PTFE backed with EPDM or FKM  
**Seals:** EPDM, FKM



**NSF-61 Certified**  
 (1/2" - 4" PVC/CPVC/EPDM/FKM)

## Type-23 Multiport™ Ball Valves

**Sizes:** 1/2" - 6"  
**Models (PVC & CPVC):** Socket, threaded, flanged (ANSI)  
**Models (PP & PVDF):** IPS or metric (DIN) socket, threaded, butt, flanged (ANSI)  
**Bodies:** PVC, CPVC, PP, PVDF  
**Seats:** PTFE backed with EPDM or FKM  
**Seals:** EPDM, FKM



**NSF-61 Certified**  
 (1/2" - 4" PVC/EPDM/FKM)

## Type-21a SST Flow Control Ball Valves

**Sizes:** 1/2" - 2"  
**Models:** Socket, threaded, flanged (ANSI)  
**Body:** PVC  
**Seats:** PTFE backed with EPDM or FKM  
**Seals:** EPDM, FKM



## Omni® Type-27 Ball Valves

**Sizes:** 3/8" - 2"  
**Models:** Socket, threaded  
**Bodies:** PVC, CPVC  
**Seat:** PTFE backed with EPDM  
**Seal:** EPDM



**NSF-61 Certified**  
 (3/8" - 2" PVC/EPDM)



## Ball Check Valves

**Sizes (True Union):** 1/2" - 2"

**Sizes (Single Union):** 3" - 4"

**Models (PVC & CPVC):** Socket, threaded, flanged (ANSI)

**Models (PP & PVDF):** IPS or metric (DIN) socket, threaded butt flanged

**Bodies:** PVC, CPVC, PP, PVDF

**Seats:** EPDM, FKM, PTFE

**Seals:** EPDM, FKM, PTFE

**Options:** Foot valve screen and stainless steel springs



**NSF-61 Certified**

(1/2" - 4" PVC/CPVC/EPDM/FKM)

## Gate Valves

**Sizes:** 1-1/2" - 14"

**Body:** HI-PVC

**Model:** Flanged (ANSI)

**Type:** Non-rising stem

**Seals:** EPDM or FKM



**NSF-61 Certified**

(1-1/2" - 14" PVC/PP/EPDM/FKM)

## Type-14 True Union Diaphragm Valves

**Sizes:** 1/2" - 2"

**Bodies:** PVC, CPVC, PP, PVDF

**Bonnet:** PVC, PP, PPG, PVDF

**End Connectors (PVC & CPVC):**

IPS socket or threaded

**End Connectors (PP & PVDF):**

IPS or metric (DIN) socket, threaded, butt

**Diaphragms:** EPDM, three-layer EPDM/PVDF/PTFE; also available in nitrile and FKM



**NSF-61 Certified**

(1/2" - 2" PVC/CPVC/EPDM/PTFE)

## Swing Check Valves

**Sizes:** 3/4" - 8"

**Model:** Flanged (ANSI)

**Bodies:** HI-PVC, PP, PVDF

**Seats:** EPDM, FKM, PTFE

**Options:** Lever and weight stainless steel springs



## Labcock® Ball Valves

**Size:** 1/4"

**Bodies:** PVC

**Models:** Male thread x male thread, male thread x hose (OD 0.375"), male thread x female thread, male thread x hose, hose x hose, female thread x female thread, male thread elbow (OD 0.63") 90°

**Seats:** EPDM

**Seals:** EPDM



**NSF-61 Certified**

(1/4" PVC/EPDM)

## Globe Valves

**Sizes:** 1/2" - 4"

**Bodies:** PVC, PP

**Model (Flanged):** 1/2" - 4" (ANSI) (PVC and PP)

**Model (Socket or Threaded):** 1/2" - 2" (PVC), 1/2" - 1" (PP)

**Seals:** EPDM or FKM



## Flanged Diaphragm Valves

**Sizes:** 1/2" - 10"

**Bodies:** PVC, CPVC, PP, PVDF

**Bonnet:** PVC, PP, PPG, PVDF

**End Connectors:** Flanged

**Diaphragms:** EPDM, three-layer EPDM/PVDF/PTFE; also available in nitrile and FKM



**NSF-61 Certified**

(1/2" - 4" PVC/CPVC/EPDM/PTFE)

## Constant Flow Valves

**Sizes:** 1/2", 3/4", 1", 2", 3" and 4"

**Body:** PVC

**Bonnet:** PVC

**Model:** Flanged (ANSI)

**Seals:** EPDM

**Springs:** 304 Stainless steel with PTFE coating



# Thermoplastic Valves

## Type-57P Butterfly Valves

**Sizes (Lever):** 1-1/2" - 8"  
**Sizes (Gear):** 1-1/2" - 14"  
**Models:** Wafer, machined lug  
**Operators:** Lever, Plasgear™  
**Bodies:** PVC, CPVC, PP, PVDF  
**Discs:** PVC, CPVC, PP, PVDF  
**Seats & Seals:** EPDM, FKM, nitrile  
**Stems:** 316 Stainless steel, titanium, Hastelloy®  
**Lugs:** 316 stainless steel



**NSF-61 Certified**

*(1-1/2" - 14" PVC, CPVC, PP/EPDM/FKM)*

## Type-57 IL Butterfly Valves

**Sizes (Lever):** 3" - 8"  
**Sizes (Gear):** 3" - 12"  
**Model:** Lug  
**Operators:** Lever, Plasgear™  
**Body:** PVC  
**Discs:** PVC, PP, PVDF  
**Seats & Seals:** EPDM, FKM, nitrile  
**Stems:** 316 Stainless steel, titanium, Hastelloy®  
**Lugs:** 316 Stainless steel



**NSF-61 Certified**

*(3" - 12" PVC/PP/EPDM)*

## Type-57 LIS Butterfly Valves

*ISO-5752 short face-to-face*

**Sizes:** 3" - 8"  
**Models:** Wafer, lug  
**Operators:** Lever, Plasgear™  
**Body:** PVC  
**Discs:** PVC, CPVC, PP, PVDF  
**Seats & Seals:** EPDM, FKM, nitrile  
**Stems:** 316 Stainless steel, titanium, Hastelloy®  
**Lugs:** 316 Stainless steel



## Large Diameter Butterfly Valves

**Sizes:** 28" - 48"  
**Model:** Wafer  
**Operator:** Plasgear™  
**Body:** PDCPD  
**Discs:** PDCPD, PP, PVDF  
(28": PP, PVDF (disc only))  
**Seats & Seals:** EPDM, FKM  
**Stem:** 403 Stainless steel



## High Pressure Butterfly Valves

**Sizes:** 16" - 24"  
**Model:** Wafer  
**Operator:** Plasgear™  
**Body:** PDCPD  
**Discs:** PP, PVDF  
**Seats & Seals:** EPDM, FKM, nitrile  
**Stems:** 403 Stainless steel



## Type-55 IS Butterfly Valves

*ISO-5752 short face-to-face*

**Sizes (Lever):** 2" - 5"  
**Sizes (Gear):** 2" - 16"  
**Models:** Wafer  
**Operators:** Lever, Plasgear™  
**Body:** Powder-coated ductile construction iron  
**Discs:** PTFE  
**Seat & Seal:** PTFE backed with neoprene  
**Stem:** 304 stainless steel



## Pool-Pro® Butterfly Valves

**Sizes:** 1-1/2" - 12"  
**Models:** Wafer  
**Operators:** Lever, Plasgear™  
**Body:** PVC  
**Disc:** PVC  
**Seat & Seal:** EPDM  
**Stem:** Stainless steel



## Type-75 Butterfly Valves

**Sizes:** 18" - 24"  
**Models:** Wafer, machined lug  
**Operators:** Plasgear™  
**Bodies:** PP, PVDF  
**Discs:** PP, PVDF  
**Seats & Seals:** EPDM, FKM, nitrile  
**Stems:** 403 Stainless steel, 316 stainless steel, titanium, Hastelloy®  
**Lugs:** 316 Stainless steel



## Sediment Strainers

**Sizes:** 1/2" - 4"

**Models:** Socket, threaded, flanged (ANSI)

**Body:** PVC

**Screens:** Standard 20 mesh PVC (optional 30 and 40) (20, 40 and 60 stainless steel)

**Seals:** EPDM, FKM

**NSF-61 Certified**

(1/2" - 4" PVC/EPDM/FKM)



## Globe Control Valves

**Sizes:** 1/2" - 4"

**Materials:** PVC, PP, PVDF, PTFE

**Model:** Flanged (ANSI)

**Stem Seal:** PTFE bellows

**Valve Seal:** FKM, EPDM, PTFE encapsulated FKM

**Flow Curves:** Linear or equal percentage

**Rangeability:** 1:10

**Actuation:** Electric or pneumatic

**Operators:** 3 - 15 positioner, 4 - 20 positioner



## Wafer Check Valves

**Sizes:** 3" - 12"

**Body:** PVC

**Seats:** EPDM, FKM

**Options:** SWP-B (stainless steel) spring, ETFE coated

Available in ANSI, DIN or JIS pattern



## AV Gaskets

**Materials/Sizes:**

EPDM: 1/2" - 12"

PTFE-bonded EPDM: 1/2" - 12"

PVDF-bonded EPDM: 1/2" - 10"

(except 1-1/4" and 2-1/2")



## Butterfly Valve Features

### Plasgear™ (Plastic Gear)

Plasgear™ is standard on all Asahi/America 1-1/2" - 14" Type-57P butterfly valves and 16" Type-56 butterfly valves; it can also be supplied without the valve. Constructed of composite plastic with black urethane coating, Plasgear™ will not corrode or rust as a result of exposure to harsh chemicals.



## Ball Valve Options

### Operating Nuts

Available in 2" square nut or "T" nut configurations. Used for remote operation of a valve by a wrench.



### Type-21 Ball Valve Locking Handles

Prevents unauthorized operation of the valve. Available in sizes 1/2" - 4" (only sizes 2-1/2" - 4" require tool for installation).



## Butterfly Valve Options

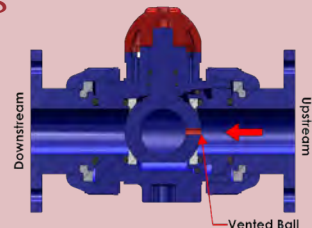
### Speed Handle™

The Speed Handle™ is an accessory added to the Plasgear™ gear operator for butterfly valves. The revolving grip permits faster, single-handed revolutions of the hand wheel for quicker valve actuation.



### Vented Ball Valves

Prevents off-gas build up in sodium hypochlorite applications. We can factory-equip our ball valves with an 1/8" vent hole. This provides a longer valve life and safer operation.



### Chain Operator

Installed on the round handwheel of a valve in overhead, out-of-reach locations. The valve is operated by pulling on the chain.



### Stem Extension Kits

Type-21 ball valve stem extension kits are the ideal solution for accessing valves that are installed in out-of-reach locations.



# Electric Actuators & Accessories

## Series 19 CAV Com Pack® Electric Actuators

**Sizes:** C20 for Type-21, Type-23, and Type-27 ball valves

**Model:** Type-21, Type-23: On/off, failsafe  
Type-27: On/off

**Enclosure:** NEMA 4X

**Voltage:** 95 VAC to 265 VAC and 24 VAC/VDC

**Torque:** 177 in-lbs

**Valve Options:** Available as valve and actuator package with Type-21 ball valves, Type-23 Multiport™ ball valves, and Type-27 ball valves

**Conduit:** 2 meter flying leads as standard



## Series 19 SAV Smart Pack® Electric Actuators

**Sizes:** S20, S50, S110

**Models:** On/off, failsafe, modulating, modulating failsafe

**Enclosure:** NEMA 4X

**Voltage:** 95 to 265 VAC multi-voltage

**Torque:** 177 in-lbs to 973 in-lbs

**Valve Options:** Available as valve and actuator package with Type-21 Type-21a SST ball valves, Type-23 Multiport™ ball valves, and Type-57 series butterfly valves

**Conduit:** 2 meter flying leads as standard



## Series 19 MAV MultiPack® Electric Actuators

**Sizes:** S20, S50

**Models:** On/off, modulating

**Enclosure:** NEMA 4X

**Voltage:** 95 to 265 VAC multi-voltage, 24 VAC/VDC

**Torque:** 177 in-lbs to 442 in-lbs

**Valve Options:** Available as valve and actuator package with Type-14 diaphragm valves and Type-C gate valves

**Conduit:** 2 meter flying leads as standard



## Series 92 Electric Actuators

**Torque:** 400 in-lbs to 2,000 in-lbs

**Voltage:** 120 VAC

**Enclosure:** NEMA 4X and NEMA 7

**Conduit:** 2 x 1/2 NPT

**Manual Override:** Declutching

**Options:** Voltages, auxiliary contacts, heater, positioners, transmitter, explosion-proof enclosure

**Valve Options:** Can be mounted on Type-21/21a ball valves, Type-23 Multiport™ ball valves, and Type-57P butterfly valves



UL-508 LISTED  
UL-1203  
ATEX Exd 11B T4

## Series 94 Electric Actuators

**Torque:** 150 in-lbs to 300 in-lbs

**Voltage:** 120 VAC

**Enclosure:** NEMA 4X

**Conduit:** 2 x 1/2 NPT

**Manual Override:** Declutching

**Options:** Voltages, auxiliary contacts, heater, positioners, transmitter

**Valve Options:** Can be mounted on Type-21/21a ball valves, Type-23 Multiport™ ball valves, Type-57P butterfly valves, and Type-75 butterfly valves



UL-508 LISTED

## Series 17 Electric Actuators

**Torque:** 350 in-lbs

**Voltage:** 85 - 265 VAC and 24 VDC

**Enclosure:** NEMA 4X/6

**Conduit:** Flying leads

**Manual Override:** Declutching

**Auxiliary Contacts:** Two-SPDT switches

**Heater:** 2 Watts

**Valve Options:** Can be mounted on Type-21/21a ball valves, Type-23 Multiport™ ball valves, and Type-57P butterfly valves



## Local/Remote Stations

- Used in conjunction with Series 10, Series 92, or Series 94 electric actuators
- NEMA 4X enclosure open/close selector
- Switch and indicator lights 120 VAC



## Series 10 Electric Actuators

**Torque:** 1,320 in-lbs to 26,040 in-lbs

**Voltage:** 110 VAC

**Enclosure:** NEMA 4X/6

**Conduit:** 2 x 3/4 NPT

**Manual Override:** Declutching

**Auxiliary Contacts:** Two-SPDT switches

**Heater:** 7 - 10 Watts

**Options:** Voltages, positioners, transmitter, explosion-proof enclosure



CSA  
ATEX



## Series 79 Pneumatic Actuators

**Models:** A79P - M79P

**Torque:** 50 in-lbs to 44,611 in-lbs

**Action:** Single acting, double acting

**Air Supply:** 80 - 120psi (can adjust springs for lower air supply)

**Materials:** PAG, 316 stainless steel, Rilsan-coated aluminum

**Design:** Rack and pinion

**Options:** Filter regulator, solenoids, limit switches, positioners, declutchable manual override; can adjust springs for lower air supply

**Valve Options:** Can be mounted to Type-21/21a ball valves, Type-23 Multiport™ valves, and Type-57P butterfly valves



## Type-14 Pneumatic Actuators

**Sizes:** 1/2" - 4"

**Models:** Air-to-air, air-to-spring

**Indication:** Top visual indication of valve position

**Air Supply:** 60 - 90psi

**Bodies:** PVC, CPVC, PP, PVDF

**Bonnet:** PPG

**Options:** Solenoids, limit switches, positioners



## Series 79 PST A202DN

**Input Current:** 4 to 20mA

**Supply Air Pressure:** 60 - 100psi

**Resolution:** 0.2% of span

**Linearity:** 0.5% of span

**Hysteresis:** 0.5% of span

**Repeatability:** 0.3% of span

**Air Connection:** 1/4" NPT

**Conduit Entry:** 1/2" NPT



## Type-14 PST A202DN

**Input Current:** 4 to 20mA

**Supply Air Pressure:** 60 - 90psi

**Resolution:** 0.2% of span

**Linearity:** 0.5% of span

**Hysteresis:** 0.5% of span

**Repeatability:** 0.3% of span

**Air Connections:** 1/4" NPT

**Conduit Entry:** 1/2" NPT



## Series 79 PST 101

**Input Signal:** 3 - 15psi

**Supply Air Pressure:** 60 - 100psi

**Air Consumption:** 0.4 CFM at 60psi

**Linearity:** 2% of span

**Hysteresis:** 1% of span

**Repeatability:** 0.5% of span

**Air Connection:** 1/4" NPT



## Type-14 PST 101

**Input Signal:** 3 - 15psi

**Supply Air Pressure:** 60 - 90psi

**Air Consumption:** 0.4 CFM at 60psi

**Linearity:** 2% of span

**Hysteresis:** 1% of span

**Repeatability:** 0.5% of span

**Air Connections:** 1/4" NPT



## Fast Pack Valve & Actuator Packages

- Electric or pneumatic actuators mounted on ball or butterfly valves
- Ten different options to choose from

**SHIPS WITHIN  
24 HOURS FROM  
TIME OF ORDER!**



# Industrial Piping Systems



## Proline® PP Piping System



**SDR 11, 150psi:** 20 - 500mm (1/2" - 20")  
**SDR 17, 90psi:** 63 - 1200mm (2" - 48")  
**SDR 33, 45psi:** 110 - 1200mm (4" - 48")  
 (Other sizes and SDRs available up to 1400mm (55"))  
**Welding:** Butt, socket, electrofusion

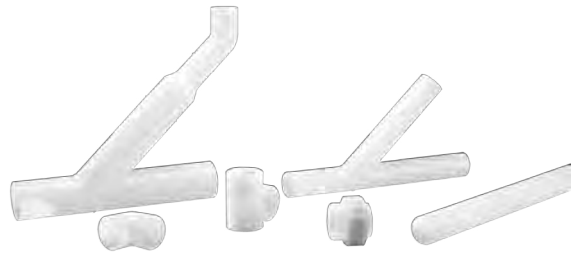
*NSF-61 Certified*

## Ultra Proline® ECTFE (Halar®) Piping System



**SDR 21, 150psi:** 20 - 160mm (1/2" - 6")  
**Welding:** Butt

## Super Proline® PVDF (Chemical Grade) Piping System



**SDR 21, 230psi:** 20 - 315mm (1/2" - 12")  
**SDR 33, 150psi:** 90 - 400mm (3" - 16")  
**Welding:** Butt, socket

## Chem Proline® Advanced PE Piping System



**SDR 11, 150psi:** 20 - 315mm (1/2" - 12")  
**Welding:** Butt, socket, electrofusion

*NSF-61 Certified*



## Air-Pro® Specially Formulated PE Compressed Air Piping System



**SDR 7.4, 230psi:** 20 - 110mm (1/2" - 4")  
**SDR 11, 150psi:** 160 - 315mm (6" - 12")  
**Welding:** Butt, socket, electrofusion

## Pro-Vent® Duct System



**PP:** 63mm - 1200mm (2" - 48")  
**PPs:** 63mm - 1200mm (2" - 48")  
**PPs-el:** 8mm - 400mm (4" - 16")  
**PE:** 90mm - 1200mm (3" - 48")  
**PVDF:** 63mm - 400mm (2" - 16")  
**Welding:** Hot air or extrusion welding

## Pressure Regulators/ Pressure Relief Valves



**Sizes:** 20mm - 110mm (1/2" - 4")  
**Models:** Pressure regulators, back pressure regulators, relief valves for industrial and high purity piping systems  
**Materials:** PVC, PP, PPn, PVDF, ECTFE

Asahi/America's Air-Pro® compressed air piping system has a 10-year limited product warranty. Scan the QR code or visit our website at [asahi-america.com/support/warranty-policy](http://asahi-america.com/support/warranty-policy) for full terms and conditions.



# Double Containment Piping Systems

## Poly-Flo® Co-extruded Double Contained Piping System



**Materials:** Proline® PP-R, Chem Proline® Advanced PE  
**Pipe & Fittings:** 1" x 1-1/2" (32 x 50mm), 2" x 3" (63 x 90mm), 4" x 6" (110 x 160mm), and 6" x 9" (160 x 225mm)  
**Welding:** Simultaneous butt fusion

## Duo-Pro® Engineered Double Contained Piping System



**Materials:** Proline® PP, Super Proline® Chem Grade PVDF, Ultra Proline® ECTFE, Chem Prolok® Advanced PE  
**Pipe & Fittings:** 1/2" x 2" - 16" x 20"  
**Welding:** Simultaneous butt fusion, staggered butt fusion  
**NSF-61 Certified**  
(Chem Proline® Advanced PE and Proline® PP components used)

## Fluid-Lok® PE Double Contained Piping System



**Material:** PE 4710  
**Pipe and Fittings:** 1" x 3" - 24" x 32"  
**Welding:** Simultaneous butt fusion

## Pro-Lock® PVC & CPVC Double Contained Piping System



**Materials:** PVC, CPVC (clear PVC also available)  
**Pipe & Fittings:** 1/2" x 2" - 4" x 8"  
**Welding:** Staggered solvent cement joint

## LiquidWatch II® Electronic Leak Detection Systems



- A flexible, modular low-point system based on inline probes
- For underground pressure systems of hazardous chemicals

## PAL-AT™ Cable Leak Detection Systems



- A continuous leak detection cable system that can also incorporate low point probes
- Continuous sensing cable, low-point sensors, or a combination of components, cable and probes
- For underground pressure systems of hazardous chemicals



## Purad® PVDF Ultra High Purity Piping System



**SDR 21, 230psi:** 20 - 315mm (1/2" - 12")  
**SDR 33, 150psi:** 90 - 315mm (3" - 12")  
**Welding:** IR/butt, beadless, electrofusion

## PP-Pure® PP High Purity Piping System



**SDR 11, 150psi:** 20 - 315mm (1/2" - 12")  
**Welding:** IR/butt, beadless

## PolyPure® PP Natural High Purity Piping System



**SDR 11, 150psi:** 20 - 110mm (1/2" - 4")  
**Welding:** IR/butt, socket, beadless

## High Purity Accessories



- T-342 and T-343 (with sanitary end connection options)
- Z801 gauge guard
- Gooseneck faucets
- Seal clean gaskets
- Pressure regulators

## Dymatrix™ Specialty Valves

### Multiport Valves

**Sizes:** 1/8" - 1"

**Materials:** PP, PPN, PVDF, ECTFE, PTFE, PFA

**Actuation:** Manual, pneumatic

**Options:** Electric solenoid, feedback switches

**Connections:** Flare, S-300, NPT, compression, triclamp, other options available



### Diaphragm Valves

**Sizes:** 1/4" - 1"

**Materials:** PFA, PTFE

**Actuation:** Manual, pneumatic

**Connections:** Flare, S-300, NPT, other options available



### Pressure Regulators

**Sizes:** 1/4" - 1"

**Materials:** PFA, PTFE

**Actuation:** Manual, pneumatic

**Flow Ranges:**

LF: 10 - 500 mL/min

MF: 0.4 - 15 L/min

HF: 5 - 50 L/min

SHF: 10 - 100 L/min

**Connections:** Flare, S-300



### Needle Valves

**Sizes:** 1/4" - 1/2"

**Materials:** PFA, PTFE

**Actuation:** Manual

**Connections:** Flare, S-300, tube, specialty



### Pinch Valves

**Sizes:** 1/4" - 1"

**Actuation:** Manual, pneumatic

**Connections:** Flare, S-300



### Specialty Integrated Valves

- Engineered application specific solutions that combine multiple types of Dymatrix™ valves onto a single manifold block
- **Key Attributes:** Compact design, reduced fittings, and dead legs



### Diverting Valves

**Sizes:** 1/4" - 1/2"

**Body Materials:** PTFE

**Diaphragm:** PTFE, PCTFE

**O-Ring (non-wetted):** FKM,

EPDM, Viton F, Kalrez®

**Connections:** Flare, S-300

**Operation:** Pneumatic



### Industrial Dymatrix™ Valves

The Dymatrix™ product line includes PVC valves with PTFE diaphragms for DI water and chemical applications\*.

- Poppet valves (HDV12/ HDVR)
- Water hammer valves (HDVW)
- Quick drain valves (AVQDV)
- Ball valves (AVBVX)

\*Note: Visit our website [www.asahi-america.com](http://www.asahi-america.com) for more information and data sheets





## Specialty Fittings and Valves

### Compression Fittings

**Series 1C and 1+**  
**Sizes:** 1/4" - 3/4"  
**Materials:** PP, PFA in stock



### Series 6 Ball Valves

**Sizes:** 1/8" - 1/2"  
**Materials:** PP, PPn, PVDF, PFA - up to 13 port valves available



### Series 1D Flare Fittings

**Sizes:** 1/4" - 3/4"  
**Materials:** PP, PFA in stock



### Series 6 Needle Valves

**Sizes:** 1/8" - 1/2"  
**Materials:** PP, PPn, PVDF, PFA - up to 13 port valves available





WELDING  
SELECTION  
CHART

## Miniplast® System powered by the McElroy Polygon™ LT

**Butt Fusion:**  
20mm - 110mm (1/2" - 4" nominal)

**Materials:**  
[See Welding Selection Chart](#)



## Hydraulic Welding Tools

**Butt Fusion:**  
63mm - 630mm (2" - 24" nominal)

**Materials:**  
[See Welding Selection Chart](#)



## Productivity Package

**Butt Fusion:**  
250mm - 630mm (10" - 24" nominal)

**Materials:**  
[See Welding Selection Chart](#)



## SmartFab™ 125

**Socket Fusion:**  
20mm - 125mm (1/2" - 4-1/2")

**Materials:**  
[See Welding Selection Chart](#)



## Hot Air Weld Tool

**Hot Air Welding:**  
3mm - 4mm round rod and 5mm x 7mm triangular

**Materials:**  
PVC, PE, PP, PVDF



## Maxiplast® System powered by the McElroy Polygon™

**Butt Fusion:**  
63mm - 160mm (2" - 6" nominal)

**Materials:**  
[See Welding Selection Chart](#)



## Rolling 618

**Butt Fusion:**  
160mm - 450mm (6" IPS - 18" IPS)

**Materials:**  
[See Welding Selection Chart](#)



## Polymatic Tool

**Electrofusion:**  
Single wall piping systems

**Materials:**  
PE, PP



## Hand Socket Welder Tool

**Socket Fusion:**  
20mm - 63mm (1/2" - 2")

**Materials:**  
[See Welding Selection Chart](#)



## Extrusion Welder Tool

**Extrusion Welding:**  
3mm - 5mm (1/8" - 3/16")

**Materials:**  
PP, PPs, PPs-EI, PE, PVDF



All equipment shown on this page is available for purchase and rental



# SP Series Welding Equipment

## SP 63-S Mobile V3

### IR Fusion:

20mm - 63mm (1/2" - 2")

### Materials:

PE 100-RC, PP, PVDF, ECTFE



## SP 110-S V3

### IR Fusion:

20mm - 110mm (1/2" - 4")

### Materials:

PE 100-RC, PP, PVDF, PFA, ECTFE, Poly-Flo®



## SP 250-S V3

### IR Fusion:

90mm - 250mm (3" - 10")

### Materials:

PE 100-RC, PP, PVDF



## SP 315-S V3

### IR Fusion:

90mm - 315mm (3" - 12")

### Materials:

PE 100-RC, PP, PVDF



## EF 110-B

### Beadless Electrofusion:

20mm - 63mm (1/2" - 2")

### Materials:

Only PVDF



## SP 110-B

### Beadless Fusion:

20mm - 110mm (1/2" - 4")

### Materials:

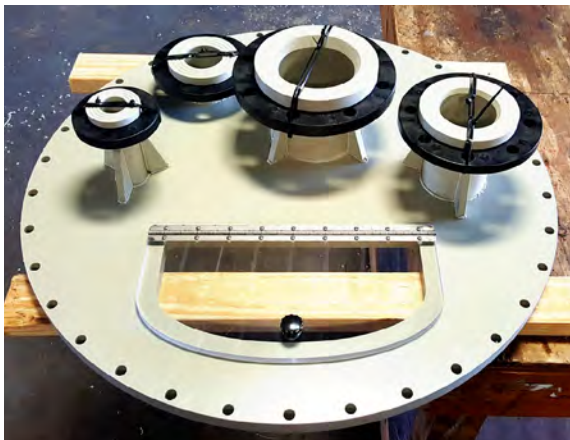
PP, PVDF

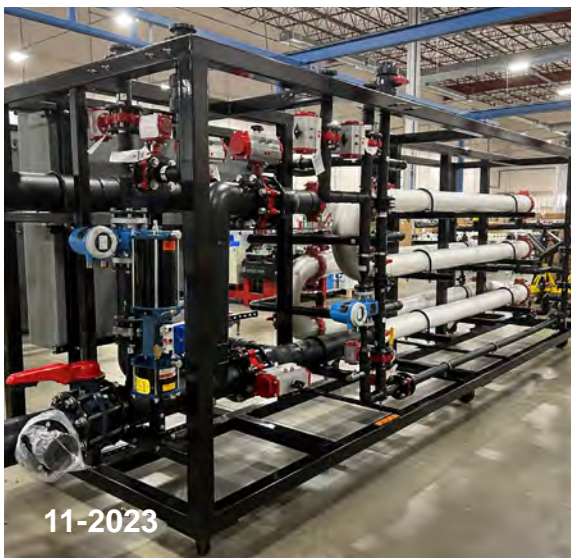


# Your Experts in Custom Fabrication

From concept to completion, we're dedicated to supporting you. Asahi/America's experienced team of application engineers and fabrication personnel will work to accommodate your system's unique needs with our wide range of corrosion resistant thermoplastic materials. Some of our capabilities include:

- Pre-fabricated pipe spools
- Manifolds & distribution headers
- Double containment pipe & valves
- Mitered fittings
- Tank & vat fume covers
- Duct work
- Storage tanks
- Machined components
- High purity pipe spools & valves
- Manholes, sumps & catch basins
- Vessel internals, dip pipes & spargers







# Another Corrosion Problem Solved.<sup>™</sup>

655 ANDOVER STREET  
LAWRENCE, MA 01843

DIRECT SALES:  
EAST: 800-232-7244  
CENTRAL: 800-442-7244  
WEST: 800-282-7244

[ASAHI-AMERICA.COM](http://ASAHI-AMERICA.COM)

| 800-343-3618

| [ASAHI@ASAHI-AMERICA.COM](mailto:ASAHI@ASAHI-AMERICA.COM)