

SEAL CLEAN GASKETS



TECHNICAL SPECIFICATION:

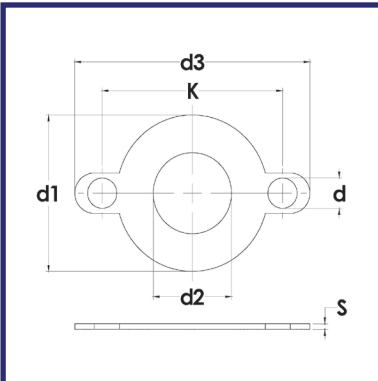
Material:	100% virgin expanded PTFE (ePTFE), No fillers or elastomer particles
Inner Diameter:	Matches SDR pipe ID
Outer Diameter:	Matches Asahi stub end (flange adapter) shoulder OD
Packaging:	Cleaned in an ISO 6 (Class 1000) cleanroom and group double bagged
Size Range:	1/2" - 12" (20 - 315mm) SDR 11, 21, and 33

FEATURES:

- High purity 100% virgin ePTFE design provides low leachouts
- Matches SDR pipe inner diameter exactly to eliminate walls and crevices where bacteria can grow
- Bolt hole cutouts allow for quick and accurate installation
- High creep resistance prevents over torque and deformation
- Strong resistance to internal blowout, which is commonly seen in rubber gaskets



DIMENSIONS:



Size		d1 (in)	d2 (in)			k (in)	d3 (in)	d (in)	s (in)	Weight (lbs)
Inch	mm		SDR 11	SDR 21	SDR 33					
1/2	20	1.77	0.58	0.60	-	2.38	3.48	0.63	0.12	0.01
3/4	25	2.13	0.79	0.80	-	2.75	3.85	0.63	0.12	0.01
1	32	2.50	1.00	1.03	-	3.12	4.30	0.63	0.12	0.02
1-1/4	40	2.81	1.23	1.32	-	3.50	4.68	0.63	0.12	0.02
1-1/2	50	3.25	1.57	1.69	-	3.88	5.06	0.63	0.12	0.03
2	63	3.95	1.98	2.17	-	4.75	6.09	0.79	0.12	0.04
2-1/2	75	4.61	2.38	2.61	-	5.50	6.84	0.79	0.12	0.05
3	90	5.21	2.88	3.15	3.27	6.00	7.34	0.79	0.12	0.04
4	110	6.22	3.50	3.86	3.99	7.50	8.84	0.79	0.12	0.07
5	125	6.22	4.03	4.33	4.55	7.50	8.84	0.79	0.12	0.05
6	160	8.35	5.11	5.63	5.78	9.50	11.00	0.87	0.12	0.12
8	200	10.55	7.26	6.40	7.26	11.75	13.25	0.87	0.12	0.17
10	225	10.55	7.26	7.96	8.30	11.75	13.25	0.87	0.12	0.12
11	250	12.60	7.94	8.88	9.17	14.25	15.94	0.98	0.12	0.28
12	315	14.57	9.97	11.06	11.55	17.00	18.69	0.98	0.12	0.38