

# Actuator Options

# Diaphragm Valves



## Series 92 Electric Actuators

### Standard Features (Sizes 1/2" – 4")

- Brushless, capacitor-run motors (115V/60 Hz)
- Integral thermal overload protection with auto-reset
- Permanently lubricated gear train
- Combination NEMA 4X, 7 and 9 enclosure with thermally bonded powder coating/304 ss trim
- ISO bolt circle
- Two 1/2" NPT conduit ports prevent interference between control and power signals
- Declutchable manual override
- Highly visible position indicator
- 3-layer rotary switch for dry contact indication

### Options

- Heater and thermostat (to -40° F)
- Milliamp positioner: 4–20mA or 0–10 Vdc input signal
- 4–20mA output position transmitter
- Extra limit switches for lights or sequencing other equipment
- Feedback potentiometer

### Cycle Times Weight

NOMINAL SIZE		TIME (SEC.)
INCHES	mm	
1/2	15	190
3/4	20	210
1	25	210
1 1/2	40	210
2	50	210
2 1/2	65	210
3	80	270
4	100	270

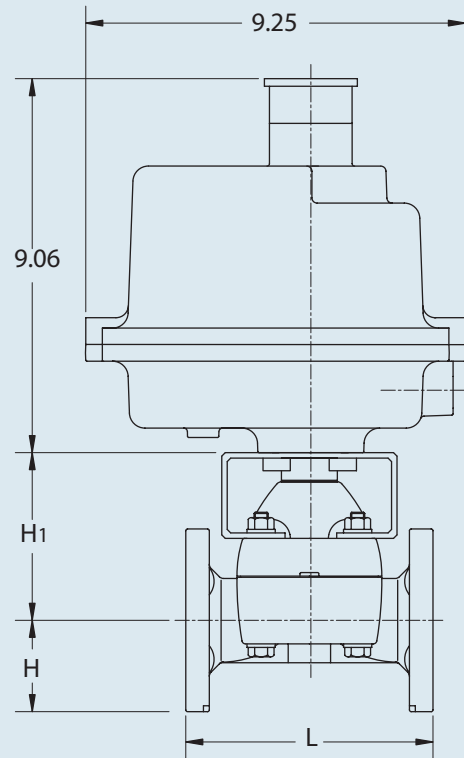
### Dimensions

NOMINAL SIZE		WT. (LBS.)
INCHES	mm	
1/2	15	16.50
3/4	20	16.80
1	25	17.40
1 1/2	40	21.20
2	50	23.00
2 1/2	65	29.33
3	80	32.64
4	100	40.80

NOMINAL SIZE		H	H1	L
INCHES	mm			
1/2	15	1.75	3.55	4.25
3/4	20	1.94	3.61	5.88
1	25	2.13	3.77	5.88
1 1/2	40	2.50	6.50	6.94
2	50	3.00	7.02	7.94
2 1/2	65	3.50	9.52	9.84
3	80	3.75	10.25	10.38
4	100	4.50	11.00	12.94

## Electrically Actuated Diaphragm

ACTUATOR DEPTH: 9.25"



NOTE: CONSULT FACTORY FOR SIZES GREATER THAN 4" FOR TRUE UNION "L" DIMENSIONS SEE PAGE 61.

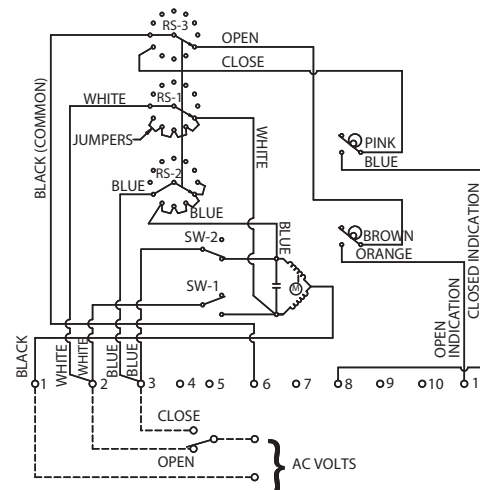
## AC Wiring (For 115 Vac only)

NOTE TO WIRING DIAGRAM:

1. EACH ACTUATOR MUST BE POWERED THROUGH ITS OWN INDIVIDUAL SWITCH CONTACTS TO AVOID CROSS FEED.

2. MOTOR HAS A THERMAL PROTECTOR AS SHOWN BY (M) IN DIAGRAM.

4. IF 115 VAC MODELS ARE PLC DRIVEN, OUTPUT CONTACTS OF PLC SHOULD BE RATED AT A MINIMUM OF 1.5 TIMES REQUIRED INPUT VOLTAGE OF ACTUATOR.



\*Duty Cycle: 25%