

Series 92

Electric Actuator

Standard Features

- **Motor:** Reversing, brushless, capacitor run 115 VAC 50/60 Hz, single phase
- **Overload protection:** Integral thermal overload protection for motor windings with automatic reset
- **Gear train:** Permanently lubricated, solid gear that is Rockwell hardened
- **Corrosion resistant housing:** Thermally bonded baked powder coating with stainless steel trim
- **ISO mounting configuration**
- **Conduit:** Two 1/2" NPT conduit entries to eliminate cross feed between control, feedback, and power signals
- **Position indication:** Highly visible beacon position indicator for positive indication of valve position, even at a distance
- **Dec clutchable manual override:** Pull up on indicator knob, insert 5/8" wrench onto flats and rotate in the appropriate direction (CCW for open, CW for close). Models with handwheel override do not require a wrench. Simply push down on handwheel until engaged with cam and rotate
- **Limit switches:** Standard end of travel limit switches can be used for light indication (not to be use with PLC for position confirmation)
- **Enclosure:** Combination Type 4X, 7 & 9 enclosure for use in various environments
- **Corrosion resistant mounting:** Mounting is with PPG or stainless steel bracket, stainless steel coupling, and stainless steel hardware
- **CE compliant motor:** All 115 VAC and 230 VAC motors are CE compliant and stamped as such
- **Extended duty cycles:** Our extended duty cycles are ideal for modulating and high cycling applications
- **Output torque:** Series 92 Electric Actuators have an output torque range from 400 in/lbs to 2000 in/lbs
- RoHS Compliant



Options

- Auxiliary (additional) limit switches
- Feedback potentiometer
- Heater and thermostat
- 4-20 mA Positioner (Modulating PCB)
- Mechanical brake
- 4-20 output source (Transmitter)
- Cycle length control module (CLC)
- Two-wire control
- Failsafe battery back up (Protek)
- Voltages
- Local Remote Station

See page 178 for more details regarding options.

Engineering Specifications

Size: S92, A92, B92, C92
 Torque: 400-2000 in/lbs
 Voltage: 120 VAC 1Ph 50/60 Hz
 Amp Draw: S92, B92 .5A, A92 .8A, C92 1.0A
 Conduit Entry: Two (2) 1/2" NPT
 Max Ambient Temperature: 150°F
 Switches: Two (2) single pole, double throw (2SPDT) 15 amp rated
 Cycle Time per 90°: S92, A92: 10 seconds
 B92, C92: 25 seconds

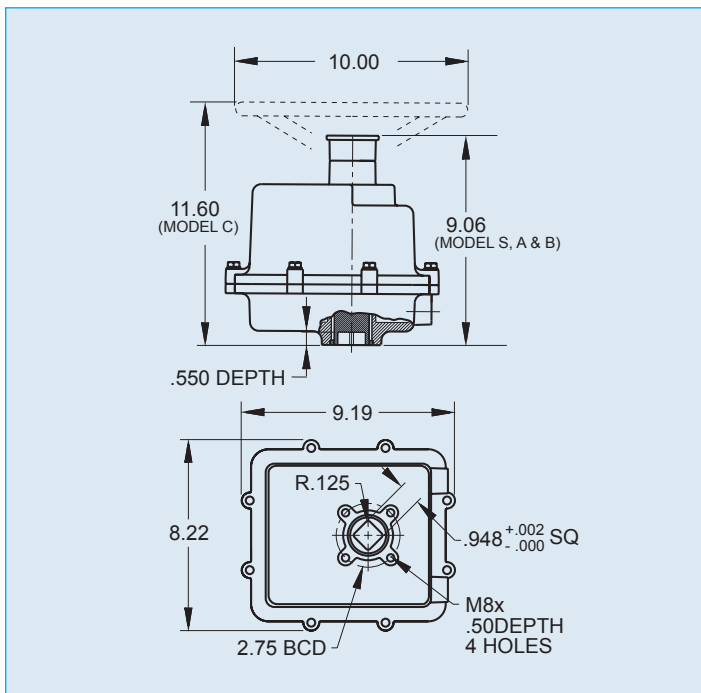
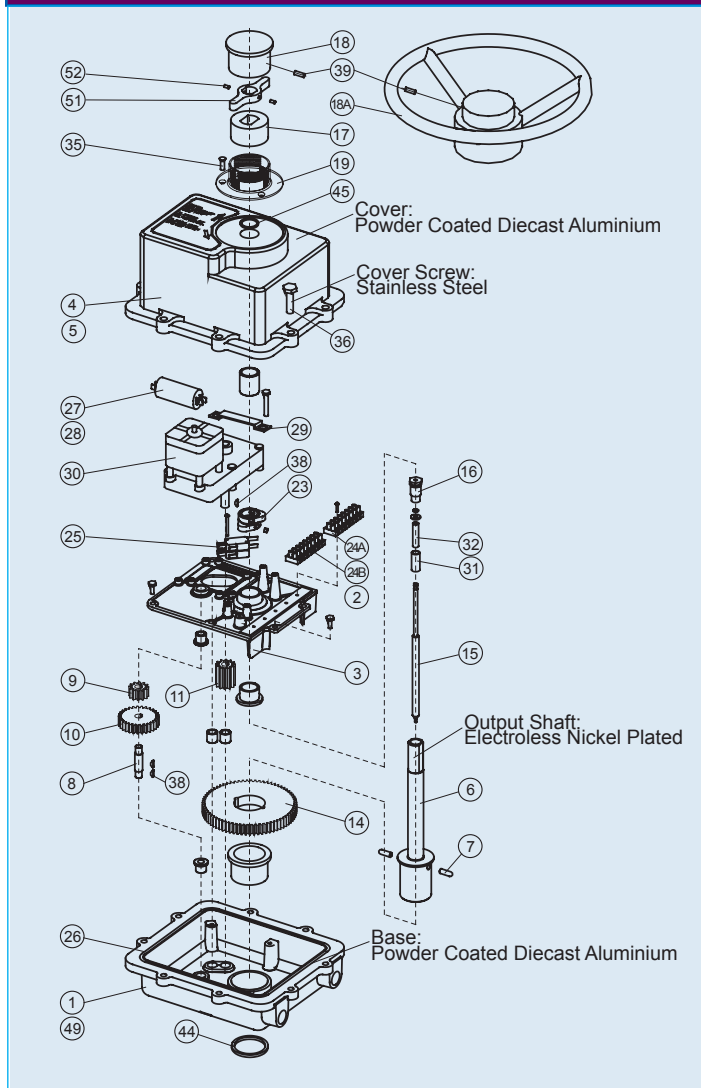
Engineering Data

ENGINEERING DATA															
Model	Torque (in/lbs)	115 Vac		230 Vac		12 Vdc		24 Vdc		12 Vac		24 Vac		Cycle Time per 90 Degrees (seconds)	Weight (lbs)
		Amp Draw	Duty Cycle	Amp Draw	Duty Cycle	Amp Draw	Duty Cycle	Amp Draw	Duty Cycle	Amp Draw	Duty Cycle	Amp Draw	Duty Cycle		
S92	400	0.5	100%	0.4	100%	2.0	75%	4.0	75%	2.0	75%	3.0	75%	10	15.3
A92	700	0.8	75%	0.6	75%	2.0	75%	4.0	75%	2.0	75%	3.0	75%	10	15.3
B92	1100	0.5	100%	0.4	100%	2.0	75%	4.0	75%	2.0	75%	3.0	75%	25	15.3
C92	2000	1.0	50%	0.6	50%	2.0	75%	4.0	75%	2.0	75%	3.0	75%	25	18.3

Note: Amp rating is considered locked rotor. Duty cycles are for ambient temperature (73°F)

Series 92

Electric Actuator



Parts List

NO.	Part Number	PCS.				Description
		S92	A92	B92	C92	
1	7401920	1	1	1	1	Base
3	7401060	1	1	1	1	Base Plate
4	7401940	1	1	1	1	Cover
6	7401900	1	1	1	-	Shaft Main
6A	7401905	-	-	-	1	Shaft Main
7	7401360	2	2	2	2	Pin
8	7401280	-	-	1	1	Shaft Stub
9	7402003	-	-	1	1	Spur Gear 1B
10	7402002	-	-	1	1	Spur Gear 1A
11	7401400	1	1	1	1	Gear Pinion
14	7401380	1	1	1	1	Gear Main
15	7401200	1	1	1	-	Shaft Inner
15A	7401210	-	-	-	1	Shaft Inner
16	7401180	1	1	1	1	Shaft Retainer
17	7401300	1	1	1	1	Knob Lower
18	7401320	1	1	1	-	Knob Upper
18A	7401995	-	-	-	1	Handwheel
19	7401260	1	1	1	1	Collar
23	7401480	2	2	2	2	Cam
24A	7401420	1	1	1	1	Terminal Block 1-8
24B	7401425	1	1	1	1	Terminal Block 9-16
25	7401460	2	2	2	2	Switch
26	7401560	1	1	1	1	O-Ring Base/Cover
27	7402948	1	-	1	1	Capacitor 4.2 mFD
27A	7402004	-	1	-	-	Capacitor 6.7 mFD
28	7403008	-	-	-	1	Capacitor 7.6 mFD
29	7401520	1	1	1	1	Capacitor Bracket
30	7401340	1	1	1	1	Motor
31	7401250	1	1	1	1	Shell
32	7401220	1	1	1	-	Spring
32A	7401230	-	-	-	1	Spring
35	7401680	3	3	3	3	Collar Screw
36	7401640	8	8	8	8	Cover Screw
38	7401880	1	1	3	3	Key, Woodruff 3/32
39	7401700	1	1	1	1	Knob Set Screw
44	7401040	1	1	1	1	Seal Base
45	7401140	1	1	1	1	Seal Cover
51	7401485	-	-	-	1	Handwheel Cam
52	8100179	-	-	-	2	Cam Set Screw

Sample Specification

All Series 92 electric actuators shall have a thermally protected, bi-directional (reversing type), capacitor run motor with a permanently lubricated gear train. 115 VAC & 230 VAC motors shall conform to CE and be indicated on motor housing. Actuator shall have solid, heat-treated gearing encompassed in a baked powder coated die cast aluminum housing with stainless steel trim, which meets Type 4X, 7 & 9. Each actuator to have a declutchable manual override, visual position indication, ISO mounting configuration, and be RoHS compliant as manufactured by Asahi/America Inc.