

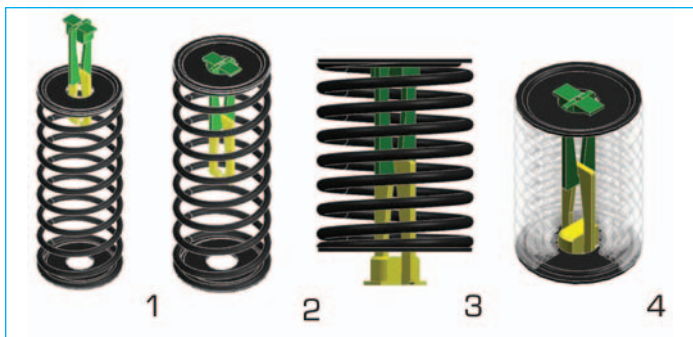


Highly Corrosion Resistance 316 SS Pneumatic Actuators with Safety Springs, Travel Stops and Bold End Caps.

The Safety Spring (for single acting pneumatic actuators) allows the removal of the end caps for maintenance or changing of the fail orientation without the fear of injury due to the stored energy of the springs. We have incorporated a captive spring design (shown as the black, green and yellow items) into the concentric spring pack so that they are contained, and the stored energy remains just that; *stored*.

The integral travel stop (for single and double acting pneumatic actuators) allows for independent adjustment of the close stroke (0 °) from -2 ° to +5 °, and independent adjustment of the open stroke (90 °) from -5 ° to +2 °.

The end caps have been redesigned such that they are secured to the actuator body with the use of 316 stainless steel socket head cap screws; eliminating the need for specialty tools.



Engineering Specifications

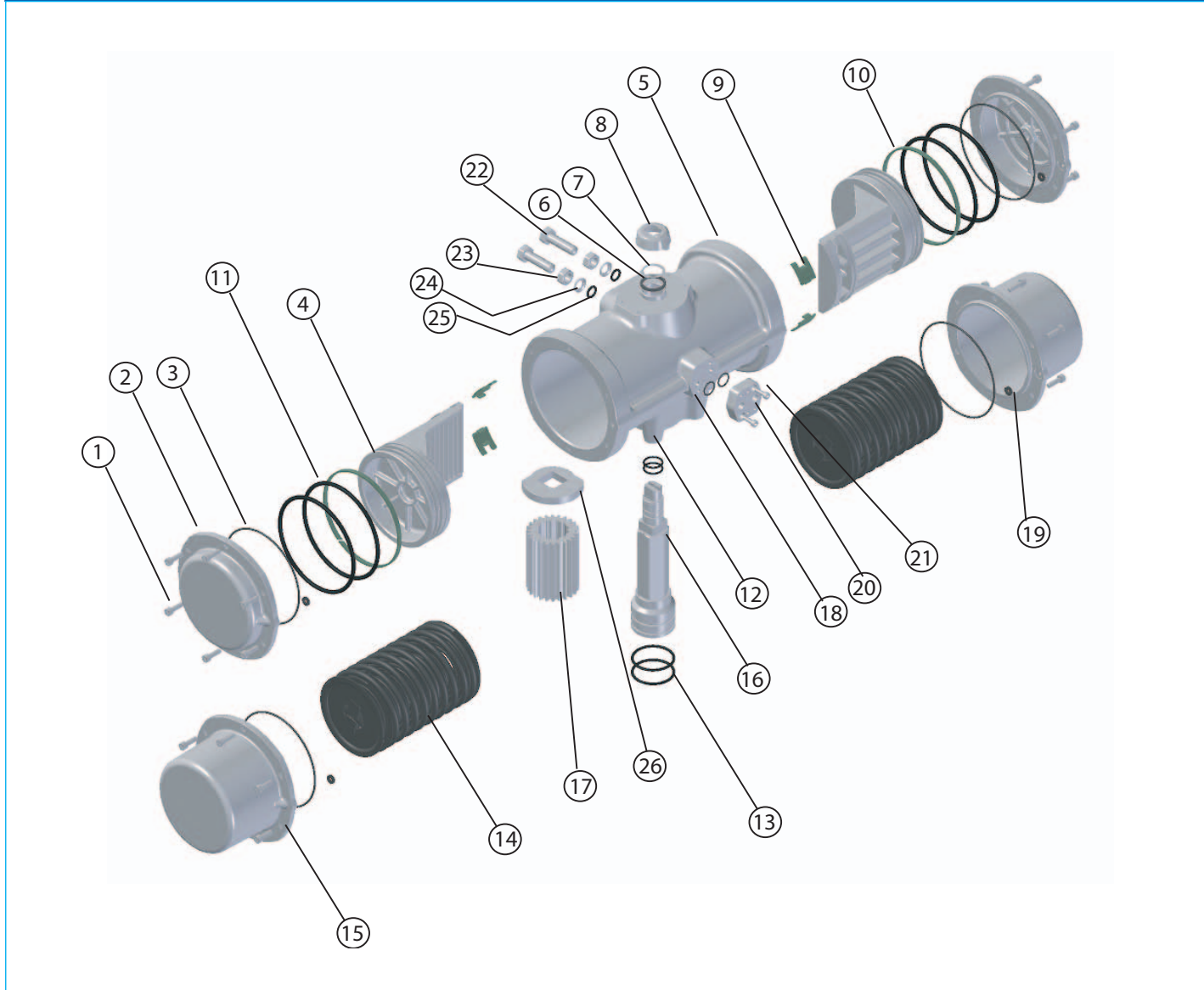
- **Actuator design:**
Double rack and pinion
- **Body and end cap material:**
316 stainless steel
- **Output Shaft:**
303 SS for BS79, CS79 & DS79
316 SS for ES79
- **Temperature range:**
-25 °F – 195 °F
- **O-Ring material:**
Self-lubricating BUNA-N
- **Output torque range:**
100 in/lbs – 1592 in/lbs
- **Piston guide and guide ring material:**
Polyacetyl for BS79, CS79 & DS79
PTFE and bronze for ES79
- **Spring Material:**
Cataphoresis coated DIN-17223-C
- **Spring Design:**
Concentric safety spring with spring retainer, all Cataphoresis coated
- **Supply air:**
60psi – 120psi
- **Air connections:**
1/4" FNPT
- **Mounting dimensions:**
ISO and NAMUR

Sample Specification

Series 79P 316 Stainless Steel Pneumatic Actuators shall be double piston, double rack and pinion design. Piston guides and guide rings shall be Polyacetyl or PTFE and bronze. Body and end cap materials shall be 316 stainless steel. Shaft shall be 303 SS or 316 SS with double o-ring seals on top and bottom, and be self-lubricating BUNA-N. Actuators shall have 1/4" FNPT air connections, and visual position indicator. Single acting versions (spring return) shall have concentric spring sets with Safety Spring design. All actuators shall have Integral Travel Stops, bolted end caps, ISO bolt circle and NAMUR mounting dimensions for the installation of optional accessories, as manufactured by Asahi/America, Inc.

Pneumatic Actuator

316 SS



Parts List

PARTS		
NO.	DESCRIPTION	MATERIAL
1	Allen Screw	316 Stainless Steel
2	Double Acting End Cap	316 Stainless Steel
3	End Cap O-Ring	NBR
4	Piston	Polyaramide or Cataphoresis Coated Aluminum Alloy
5	Actuator Body	316 Stainless Steel
6	Washer	Polyamide 6
7	Shaft Retaining Ring	303 Stainless Steel
8	Position Indicator	Polyamide
9	Piston Guide	Polyacetal or PTFE + Bronze
10	Guide Ring	Polyacetal or PTFE + Bronze
11	Piston O-Ring	NBR
12	Upper Shaft O-Ring	NBR
13	Lower Shaft O-Ring	NBR

PARTS		
NO.	DESCRIPTION	MATERIAL
14	Spring Set	Cataphoresis Coated DIN-17223-C
15	Spring Return End Cap	316 Stainless Steel
16	Shaft	303 or 316 Stainless Steel
17	Pinion Gear	Cataphoresis Coated Aluminum Alloy
18	Plate O-Ring	NBR
19	End Cap Gasket	NBR
20	Air Connection Plate	316 Stainless Steel
21	Bolt for Air Connection Plate	316 Stainless Steel
22	Adjustment Bolt	316 Stainless Steel
23	Adjustment Locknut	316 Stainless Steel
24	Bushing	303 Stainless Steel
25	Travel Stop O-Ring	NBR
26	Travel Stop Cam	316 Stainless Steel