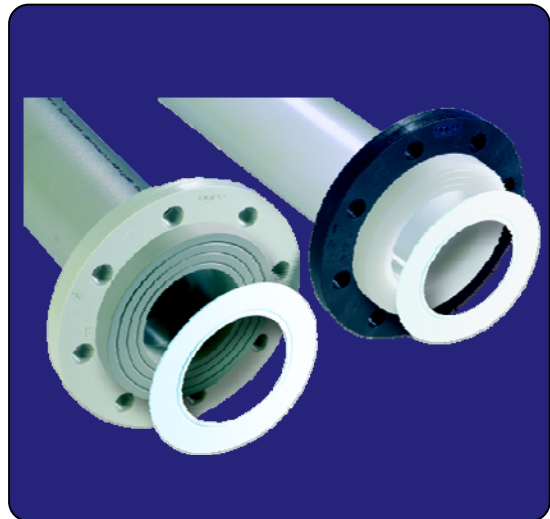


## Seal Clean High Purity ePTFE Gasket

### BENEFITS

- High Purity 100% virgin ePTFE design provides low leachouts.
- Matches SDR pipe ID exactly to eliminate walls and crevices where bacteria can grow.
- Matches Asahi Stub End shoulder OD for quick and accurate installation.
- High creep resistance prevents over torque and deformation.
- Strong resistance to internal blowout



### TECHNICAL INFO

#### MATERIAL

Seal Clean gaskets are made from 100% virgin expanded PTFE (ePTFE) consisting of a multi-directional fibrous structure and high density skin. No fillers or elastomer particles are used in the production of Seal Clean products to prevent leachout contamination.

#### PRODUCT SUPPLY

Available in sizes 1/2" (20mm) through 12" (315mm), and a wide variety of SDR ratings to match pipe ID's. Seal Clean gaskets are cleaned in a Class 100 Cleanroom and group double bagged in a PE/Nylon bag.

#### Chemical Resistance

Seal Clean gaskets have superior chemical resistance to most media excluding molten alkali metals and Flourine. Its high density construction provides very low diffusion rates and will seal highly permeable and aggressive media. The product is not subject to aging and can be stored indefinitely



#### Installation

The OD of the Seal Clean gasket exactly matches the shoulder OD of Asahi SDR Stub Ends. This allows the gasket to be quickly and easily installed, while eliminating the gaps and overhangs so common in traditional full face gaskets. Seal Clean gaskets require minimum torque for proper sealing, making them ideal for the torque limits of plastic flanges. The gaskets seldom require retorquing even after temperature changes.

### STATIC LEACH TEST

Test Medium: 5% HNO<sub>3</sub>  
 Test Equipment: ICP-MS  
 Test Units: ng/gasket

