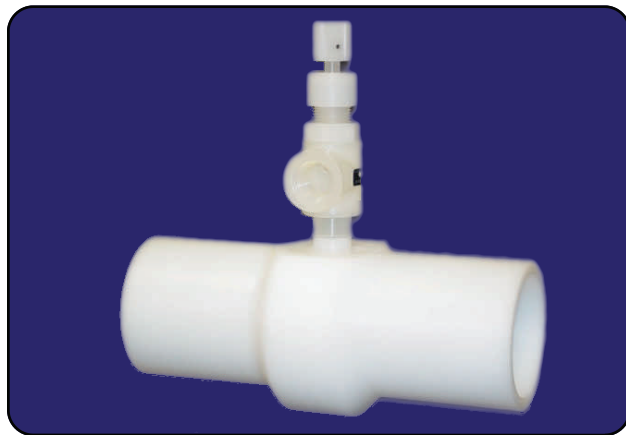


UltraPure Sampling IR Lateral Welding Technology

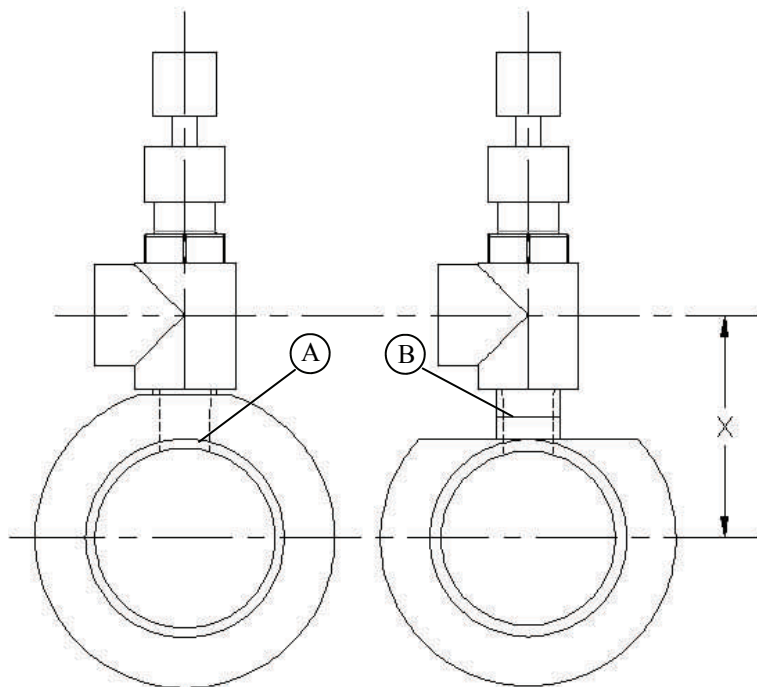
- Reduced dead leg reduces bacteria propagation
- IR welded for clean, ultra pure samples
- Proprietary IR technology based on SP series of equipment
- Full pressure rating at 68°F



Specifications

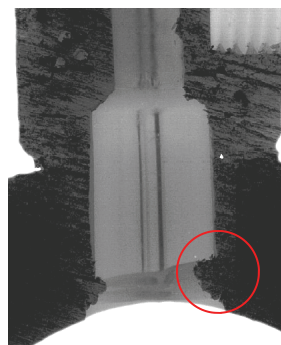
Body Material	PVDF, PP, PPn, E-CTFE
Body Size	20-110mm (1/2"-4")
Lateral Size	20-63mm (1/2"-2")

Weld Cross Section

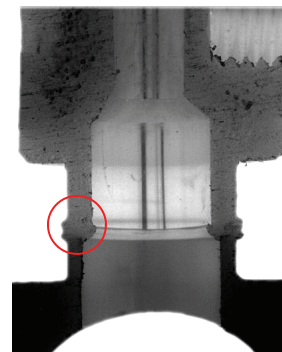


**Conventional
Socket Welding**

**IR Lateral Welding
Technology**



**A - Socket weld shows
large bead & crevices
Weld reliability factor: 0.8**



**B - IR weld provides
smaller bead
Weld reliability factor: 0.9**

Sampling Ultra Pure Water

Water sampling is a vital element in maintaining an ultra pure water system. For the most critical applications in semiconductor manufacturing, low quality water has a direct and measurable impact on product success. Even worse are false positives and system downtime.

Asahi/America has developed this welding technology and sampling product to provide the cleanest possible external measurement. Eliminate doubt in your design, build sample locations into your system at easy-to-reach, recirculating locations.

IDEAL SAMPLING LOCATIONS

- In main line, close to point-of-delivery
- Not located near walls, tees, flanges, instruments

OTHER CONSIDERATIONS

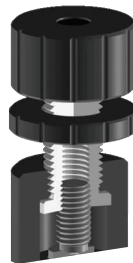
- Sample valves should run continuously
- Locate at standing height for safe operation
- Multiple sample valves at various points in the system allow for quick troubleshooting if bacteria or TOC rises
- Avoid many sample points in one location (i.e. manifold)
- Diaphragm valves tend to shed during sample procurement, leading to false highs
- Always test multiple samples at one location for best data

Dymatrix Needle Valve

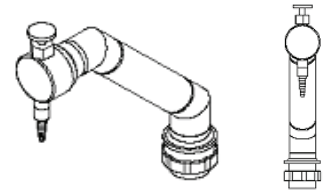
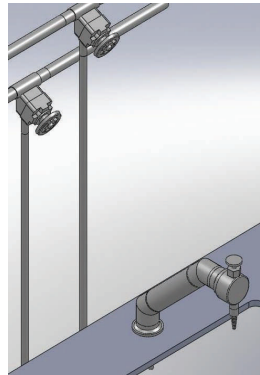


Designed to be **IR welded** to an instrumentation fitting, the Dymatrix NVM provides unparalleled performance and reliability.

Patented **dual stem** design moves the diaphragm precisely and smoothly.



Recirculating Faucet



Asahi/America's faucets continually flow, providing a clean location for sampling. Faucets can be installed on a wall, bench or customer specified.

EM-Technik Needle Valves



This threaded stem needle valve is an ideal solution for low cost, high reliability sampling. Available in angle and straight configurations with NPT and IR spigot ends available.

1/4" Sample Valve



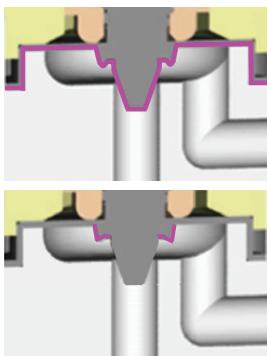
PVDF labcock comes with multiple end connections including integral FNPT, hose barb, plug and MNPT adapter. Easily installed into a tapped instrumentation fitting, this valve can be locked out using provided strap.

T-343 Zero Dead Leg Valve

Asahi/America's ZDL valves are another great choice for sampling use.



Fabricated to easily install into your existing system.



Diaphragm Needle Tip
Eliminates formation of bacteria typically found in crevices of threads on standard needle valves.

Sealing Cone
A sealing ridge encompasses the needle, which completely seals the valve while protecting the needle tip.