

Troubleshooting

What if there is no output, but the motor runs?

1. Manual override engaged. Disengage.
2. Valve stem broken. Replace stem as per appropriate valve IOM Manual.

What if valve does not cycle?

1. No power source to actuator. Check for power.
2. Power source disconnected. Check for broken wire, loose connection or no connection as per appropriate wiring diagram.
3. Mechanical brake jammed or misaligned. Check alignment of brake assembly.

What if there is water and/or moisture inside of the unit?

1. Conduit fitting installed improperly. Re-install correctly.
2. Base gasket damaged or installed improperly. Check gasket and replace if necessary.
3. Temperature swings of more than 15 degrees F. Install heater and thermostat to eliminate condensation.
4. Unit has been submerged. Raise unit above liquid level.

What if unit is oscillating?

1. Valve torque exceeds output torque of actuator. Check for chemical compatibility of valve, and flange torque.

What if motor hums and no output is observed?

1. Foreign material caught in valve. Remove material and inspect valve for damaged and/or worn parts. Replace parts as necessary.
2. Unit wired incorrectly (simultaneously powering open and closed). Check wiring as per appropriate wiring diagram.
3. Capacitor worn. Replace.

What if actuator "over-shoots" limit switches without stopping?

1. Actuators wired in parallel to each other. Please note that each actuator requires it's own individual power source.

What if thermal overload frequently cuts out motor?

1. Frequency of operation exceeds duty cycle rating. Check cycling period.
2. Unit is oscillating. Refer to above.

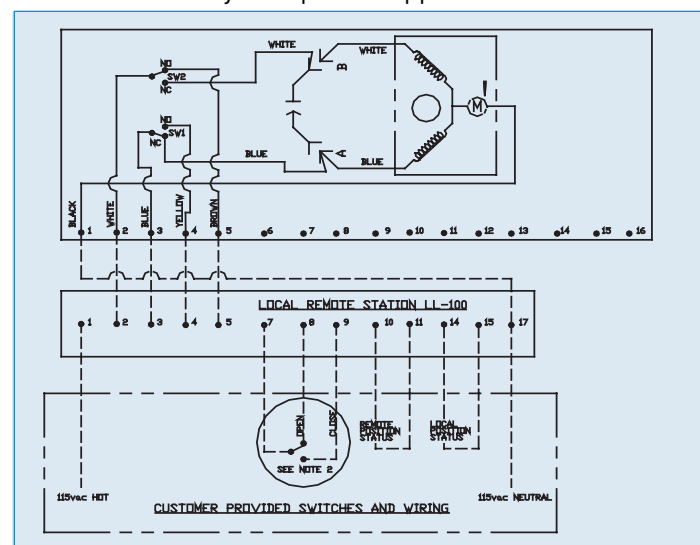


Standard Features

- Visual Light Indication
- Type 4X Enclosure Constructed of Fiberglass Polyester
- Stainless Steel Trim
- Captive Cover Gasket
- Captive Cover Screws
- Two (2) Position Selector Switch (open and close)
- Three (3) Position Selector Switch (hand, off, auto)
- 40°F - 266°F Temperature Range
- Can be used with any Electric Actuator (must specify before placing order)

Options

- Type 7 Enclosure
- 316 Stainless Steel Enclosure
- Contact Factory for Specific Applications



Note:

1. Local Remote Station is not close coupled to actuator; field wiring of local remote station to actuator is to be performed by others.
2. Customer provided switch installed at Terminals 7, 8, & 9 is for remote use only.