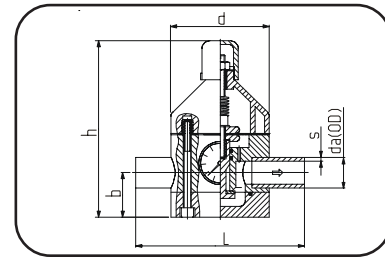


Asahi/America Regulating Products Dimensional Guide

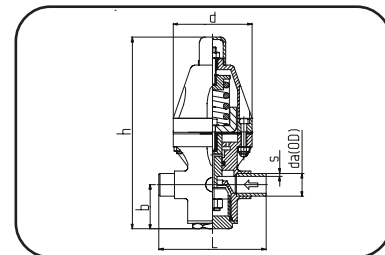
- **V82 Pressure regulator**
with guage guard/PTFE
- **Butt + IR-fusion**
- **PURAD PVDF**



da/OD [mm] [inch]		DN [mm]	d [mm]	L [mm]	b [mm]	h [mm]	setting range	SDR21 / MOP 10 bar	
								s [mm]	weight [kg]
20	1/2"	15	70	150	30	130	0.5 - 10 bar	1.9	0.87
25	3/4"	20	100	190	40	170	0.5 - 10 bar	1.9	1.78
32	1"	25	100	190	40	170	0.5 - 10 bar	2.4	2.20
40	1 1/4"	32	130	240	55	230	0.5 - 10 bar	2.4	4.15
50	1 1/2"	40	130	240	55	230	0.5 - 10 bar	3.0	4.15
63	2"	50	155	260	75	285	0.5 - 10 bar	3.0	6.50

da/OD [mm] [inch]		DN [mm]	d [mm]	L [mm]	b [mm]	h [mm]	setting range	SDR21 / MOP 6 bar	
								s [mm]	weight [kg]
75	2 1/2"	65	190	300	100	350	0.5 - 6 bar	3.6	13.17

- **V782 Pressure regulator**
without guage guard/PTFE
- **Butt + IR-fusion**
- **PURAD PVDF**



da/OD [mm] [inch]		DN [mm]	d [mm]	L [mm]	b [mm]	h [mm]	setting range	SDR21 / MOP 10 bar	
								s [mm]	weight [kg]
20	1/2"	15	83	172	48	240	0.5 - 10 bar	1.9	0.80
25	3/4"	20	112	190	65	272	0.5 - 10 bar	1.9	2.20
32	1"	25	112	190	65	272	0.5 - 10 bar	2.4	2.20
40	1 1/4"	32	165	262	95	356	0.5 - 10 bar	2.4	6.30
50	1 1/2"	40	165	262	95	356	0.5 - 10 bar	3.0	6.30



ASAHI/AMERICA

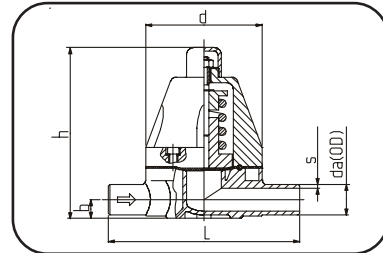
35 Green St. PO Box 653 Malden, MA 02148 T: (781)321-5409 F: (781)388-4781 www.asahi-america.com



ASAHI/AMERICA

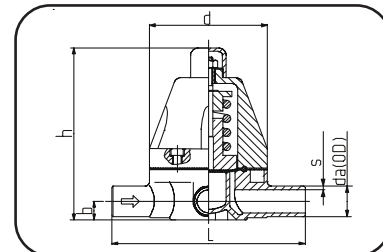
35 Green St. PO Box 653 Malden, MA 02148 T: (781)321-5409 F: (781)388-4781 www.asahi-america.com

- **V186 Back Pressure Regulator**
PTFE diaphragm
injection molded
- **Butt + IR-fusion**
- **PURAD PVDF**



da/OD		DN [mm]	d [mm]	L [mm]	b [mm]	h [mm]	setting range	SDR21 / MOP 10 bar	
								s [mm]	weight [kg]
[mm]	[inch]								
20	½"	15	83	158	20	137	0.5 - 10 bar	1.9	0.60
25	¾"	20	83	158	20	137	0.5 - 10 bar	1.9	0.60
32	1"	25	112	198	27	199	0.5 - 10 bar	2.4	1.60
40	1¼"	32	112	198	27	199	0.5 - 10 bar	2.4	1.60
50	1½"	40	165	262	43	290	0.5 - 10 bar	3.0	8.00
63	2"	50	165	262	43	290	0.5 - 10 bar	3.0	8.20

- **V185 Pressure Relief Valve**
PTFE diaphragm
injection molded
- **Butt + IR-fusion**
- **PURAD PVDF**



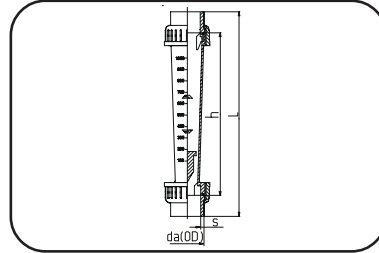
da/OD		DN [mm]	d [mm]	L [mm]	b [mm]	h [mm]	setting range	SDR21 / MOP 10 bar	
								s [mm]	weight [kg]
[mm]	[inch]								
20	½"	15	83	158	20	137	0.5 - 10 bar	1.9	0.70
25	¾"	20	83	158	20	137	0.5 - 10 bar	1.9	0.70
32	1"	25	112	198	27	199	0.5 - 10 bar	2.4	1.70
40	1¼"	32	112	198	27	199	0.5 - 10 bar	2.4	1.70
50	1½"	40	165	262	43	290	0.5 - 10 bar	3.0	8.10
63	2"	50	165	262	43	290	0.5 - 10 bar	3.0	8.30



ASAHI/AMERICA

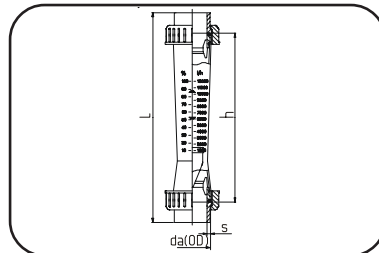
35 Green St. PO Box 653 Malden, MA 02148 T: (781)321-5409 F: (781)388-4781 www.asahi-america.com

- **M123 Flowmeter**
FPM sealing
injection molded
- **Union connection**
- **PURAD PVDF**



da/OD		DN [mm]	L [mm]	h [mm]	display range [l/h]	SDR21 / MOP 10 bar	
						s [mm]	weight [kg]
[mm]	[inch]						
20	½"	15	293	185	8 - 80	1.9	--
20	½"	15	293	185	15 - 150	1.9	--
20	½"	15	293	185	20 - 200	1.9	--
32	1"	25	320	200	15 - 150	2.4	--
32	1"	25	320	200	30 - 300	2.4	--
32	1"	25	320	200	50 - 500	2.4	--
32	1"	25	320	200	100 - 1000	2.4	--

- **M23 Flowmeter**
FPM sealing
injection molded
- **Union connection**
- **PURAD PVDF**



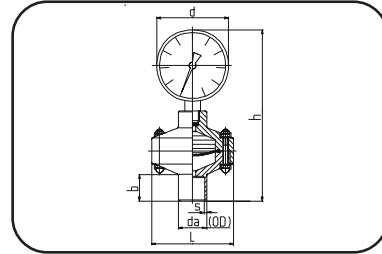
da/OD		DN [mm]	L [mm]	h [mm]	display range [l/h]	SDR21 / MOP 10 bar	
						s [mm]	weight [kg]
[mm]	[inch]						
32	1"	25	455	335	15 - 150	2.4	0.52
32	1"	25	455	335	50 - 500	2.4	0.52
32	1"	25	455	335	100 - 1000	2.4	0.52
50	1 ½"	40	467	335	200 - 2000	3.0	1.22
50	1 ½"	40	467	335	300 - 3000	3.0	1.22
63	2"	50	473	335	600 - 6000	3.0	0.52
63	2"	50	473	335	1200 - 12000	3.0	1.68
75	2 ½"	65	453	335	2000 - 20000	3.6	2.90
75	2 ½"	65	453	335	3000 - 30000	3.6	2.90



ASAHI/AMERICA

35 Green St. PO Box 653 Malden, MA 02148 T: (781)321-5409 F: (781)388-4781 www.asahi-america.com

- **Z700 Guage guard**
PTFE diaphragm
injection molded
- **Union connection**
- **PURAD PVDF**



da/OD		DN [mm]	d [mm]	L [mm]	b [mm]	h [mm]	display range [bar]	SDR21 / MOP 10 bar	
								s [mm]	weight [kg]
[mm]	[inch]								
25	$\frac{3}{4}$ "	20	63	72	30	129	10	1.9	0.32
32	1"	25	100	100	30	210	10	2.4	0.67