



**EM TECHNIK
SERIES 3L
LUER-LOCK Fittings**



35 Green Street
Malden, MA 02148

www.asahi-america.com

Phone: 781-321-5409
Fax: 781-321-4421

The Wet Process People



Male Luer-Lock x 1A Compression Fitting 1A Connection is for Flexible Tubing

Part Number: 3L1100.36

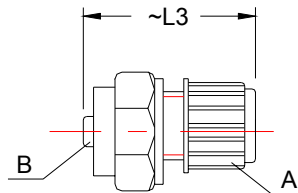


Material: PP and PVDF

Size A	Size B Luer-Lock	L4 inches (mm)	I2 inches (mm)
4/6	Male	1.08 (27.4)	0.276 (7)

Female Luer-Lock x 1A Compression Fitting 1A Connection is for Flexible Tubing

Part Number: 3L1100.46



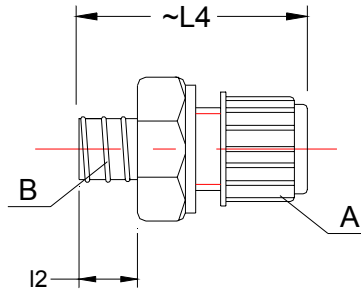
Material: PP and PVDF

Size A	Size B Luer-Lock	L3 inches (mm)
4/6	Female	0.984 (25)



Male Luer-Lock x 2M Compression Fitting 2M Connection is for Rigid Tubing

Part Number: 3L2100.36

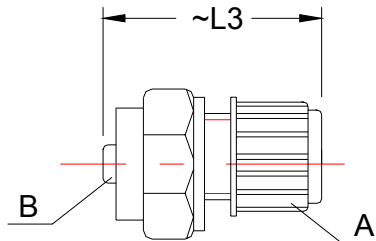


Material: PVDF

Size A	Size B Luer-Lock	L4 inches (mm)	I2 inches (mm)
0.7 – 1	male	1.08 (27.4)	0.276 (7)
1.1 – 2	male	1.08 (27.4)	0.276 (7)
2.1 – 4	male	1.08 (27.4)	0.276 (7)
4.1-6.4	male	1.08 (27.4)	0.276 (7)

Female Luer-Lock x 2M Compression Fitting 2M Connection is for Rigid Tubing

Part Number: 3L2100.46



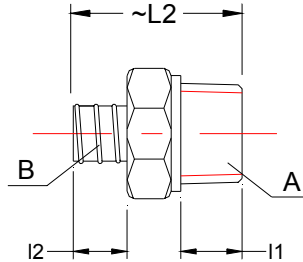
Material: PVDF

Size A	Size B Luer-Lock	L3 inches (mm)
0.7 – 1	female	0.984 (25)
1.1 – 2	female	0.984 (25)
2.1 – 4	female	0.984 (25)
4.1-6.4	female	0.984 (25)



Male Luer-Lock x male G thread

Part Number: 3L3100.36

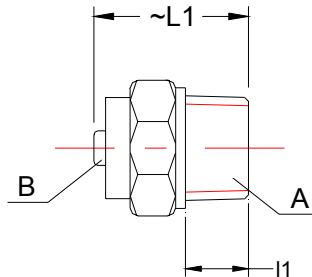


Material: PP and PVDF

Size A G thread	Size B Luer-Lock	L2 inches (mm)
1/8"	male	

Female Luer-Lock x male G thread

Part Number: 3L3100.46



Material: PP and PVDF

Size A G thread	Size B Luer-Lock	L1 inches (mm)	I1 inches (mm)
1/8"	female		