



AGRU CAD USERS GUIDE



35 Green Street, PO Box 653, Malden, MA 02148
Tel: (781) 321-5409 - Fax (781) 321-4421 - Toll Free: (800) 343-3618
www.asahi-america.com - asahi@asahi-america.com
Direct Sales: East (800) 232-7244 / Central (800) 442-7244 / West (800) 282-7244



TABLE OF CONTENTS

1. Getting Started	03
2. Working with AGRU CAD.....	04
3. Exporting CAD File.....	07
4. Appendix.....	08

CAUTIONS:

Please note this software is compatible with our Purad® PVDF, PolyPure PPN, Proline PP and Ultra Proline ECTFE (Halar®) piping systems. The double contained systems found in Agru CAD are not compatible with our Duo-Pro system. Please consult A/A HP Dimensional Guide for Agru to Asahi part number crossover chart.



1. GETTING STARTED

System requirements:

- Windows 98 / 2000 / XP / NT
- Pentium II 800 MHz or higher
- 64 MB of RAM or greater
- Catalog installation: Up to 650 MB available hard-disk space

Installation

Note: Installing the software is not necessary to run the program, however it recommended.

- Place CD in drive, the installation program will start automatically or
Click on the “Start” button and choose the “Run” option
Type: E:\software\cdstart.exe, E:\ stands for the letter of your CD-ROM drive.
Click **OK**.
- Choose *language* and press **INSTALL**.
- Choose *directory* and press **OK**
Installation will begin.
- Acknowledge completion by pressing **OK**.

Starting AGRU CAD

- Locate the AGRU icon on the desktop and double click.
- Choose *language* from the drop down menu.
- Select **START** from the screen that appears.
Be patient while AGRU CAD starts.

2. WORKING WITH AGRU CAD

There are 3 panes inside the Selection Guide that can be adjusted as desired: Top, Left & Right

Figure 2.1 shows the Catalog Tree in the left pane .

→ Open the Tree and choose the desired *product line*.

Note: Clicking the plus sign will open more options and narrow browsing scope

→ Select an item from the Right Pane by double clicking.

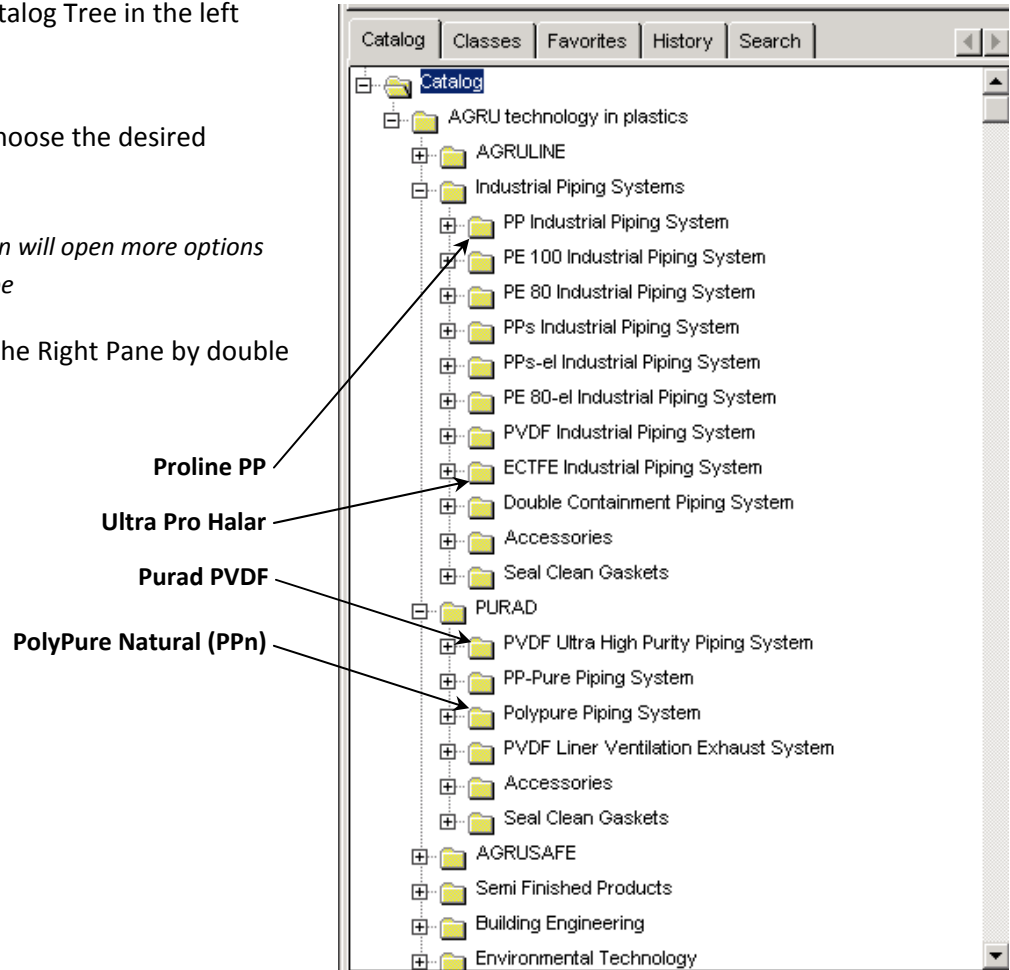


Figure 2.1 Catalog Tree

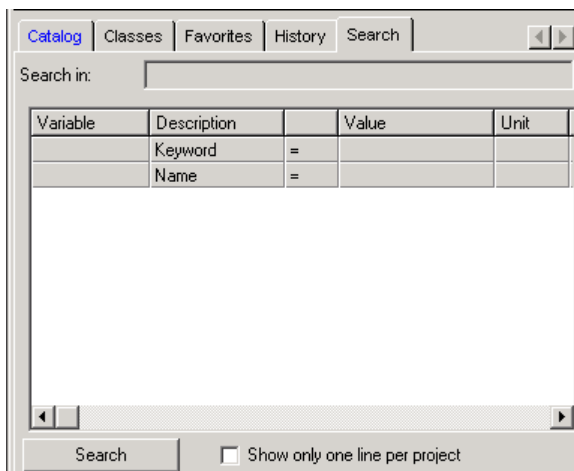


Figure 2.2 Search Tab

→ You may search for keywords or products by selecting the *Search* tab at the top of the Left pane.

→ Type in a search phrase or AGRU part number (ref. section 4) and press **SEARCH**.

Note: Items will appear in the Right pane

→ Select an item by double clicking.

Once an item has been selected figure 2.3 appears.

Each pane can be minimized and maximized. This is especially valuable for 3D view. The panes can be reset to initial view by pressing the pane organization button.

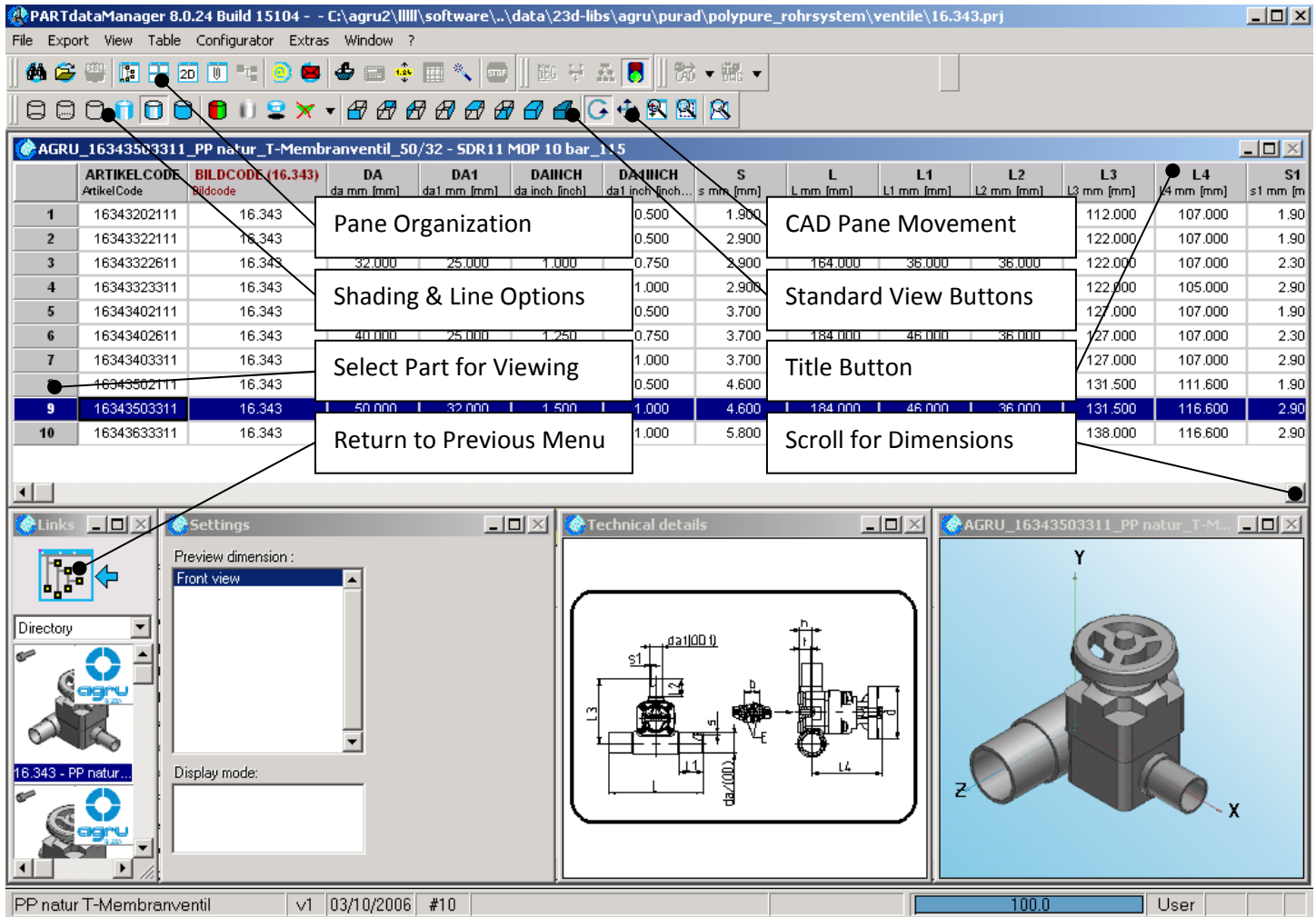


Figure 2.3

→Double click any **TITLE BUTTON** to open figure 2.4 below.

→Entering a value or range and accept by pressing **ENTER**.

NOTE: This will filter the available items.

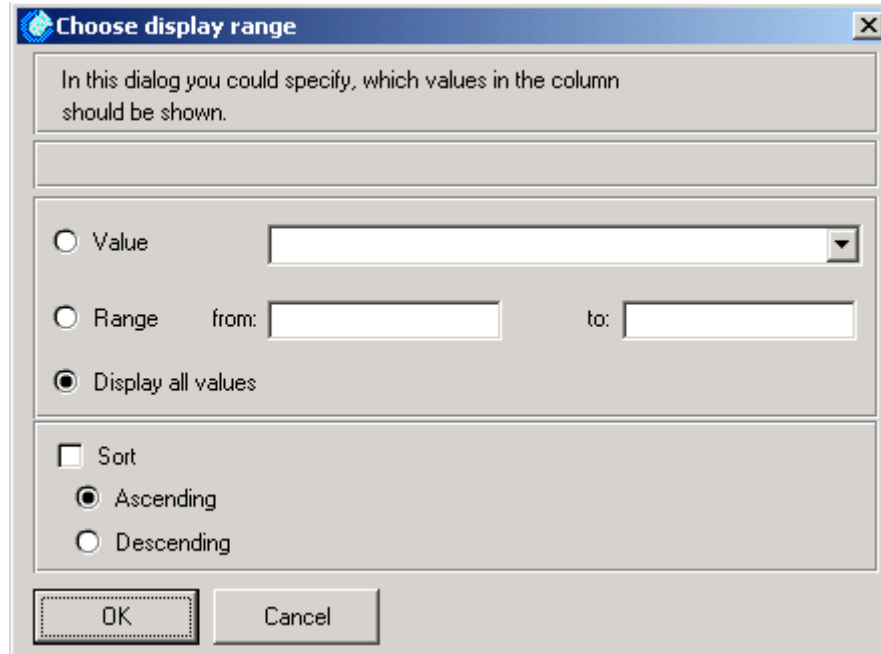


Figure 2.4

3. EXPORTING CAD FILE

Figure 3.1 shows the file formats in which the part can be exported.

→ Choose a destination and software version (figure 3.2).

→ Acknowledge by pressing **OK**.

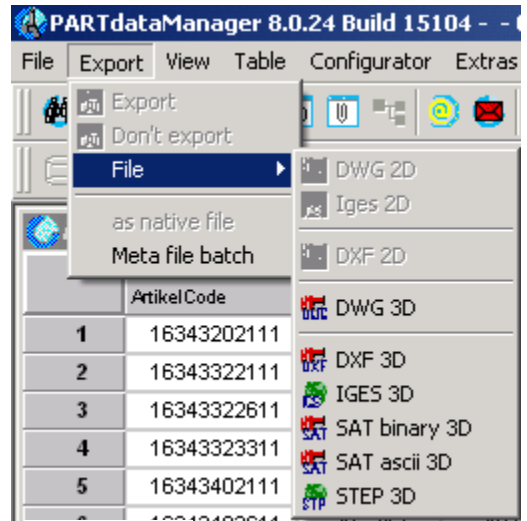


Figure 3.1

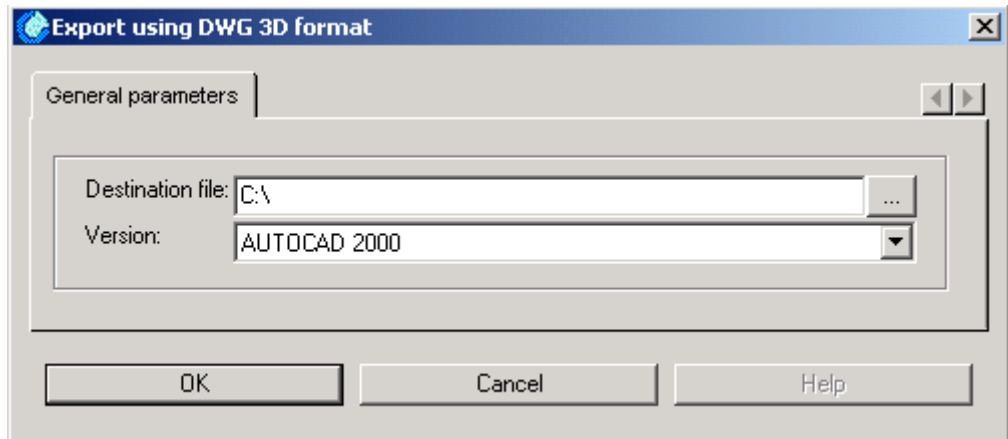


Figure 3.2



4. APPENDIX

